

PTDSS1 Rabbit pAb

Catalog No.: A13065 **1 Publications**

Basic Information

Observed MW

55kDa

Calculated MW

56kDa

Category

Primary antibody

Applications

ELISA, WB

Cross-Reactivity

Human

Background

The protein encoded by this gene catalyzes the formation of phosphatidylserine from either phosphatidylcholine or phosphatidylethanolamine. Phosphatidylserine localizes to the mitochondria-associated membrane of the endoplasmic reticulum, where it serves a structural role as well as a signaling role. Defects in this gene are a cause of Lenz-Majewski hyperostotic dwarfism. Two transcript variants encoding different isoforms have been found for this gene.

Recommended Dilutions

WB 1:500 - 1:2000

Immunogen Information

Gene ID

9791

Swiss Prot

P48651

Immunogen

Recombinant fusion protein containing a sequence corresponding to amino acids 1-70 of human PTDSS1 (NP_055569.1).

Synonyms

LMHD; PSS1; PSSA; PTDSS1

Contact

☎ | 400-999-6126

✉ | cn.market@abclonal.com.cn

🌐 | www.abclonal.com.cn

Product Information

Source

Rabbit

Isotype

IgG

Purification

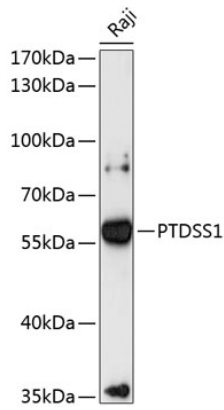
Affinity purification

Storage

Store at -20°C. Avoid freeze / thaw cycles.

Buffer: PBS with 0.01% thimerosal, 50% glycerol, pH7.3.

Validation Data



Western blot analysis of lysates from Raji cells, using PTDS1 Rabbit pAb (A13065) at 1:3000 dilution.
Secondary antibody: HRP Goat Anti-Rabbit IgG (H+L) (AS014) at 1:10000 dilution.
Lysates/proteins: 25µg per lane.
Blocking buffer: 3% nonfat dry milk in TBST.
Detection: ECL Enhanced Kit (RM00021).
Exposure time: 90s.