

[KO Validated] GCN1L1 Rabbit pAb

Catalog No.: A13075 **KO Validated**

Basic Information

Observed MW

293kDa

Calculated MW

293kDa

Category

Primary antibody

Applications

ELISA, WB

Cross-Reactivity

Human

Background

Enables RNA binding activity and cadherin binding activity. Predicted to be involved in cellular response to leucine starvation and positive regulation of transcription from RNA polymerase II promoter in response to stress. Located in cytosol.

Recommended Dilutions

WB 1:1000 - 1:5000

Immunogen Information

Gene ID

10985

Swiss Prot

Q92616

Immunogen

Recombinant fusion protein containing a sequence corresponding to amino acids 2462-2671 of human GCN1L1 (NP_006827.1).

Synonyms

GCN1L; GCN1L1; PRIC295; L1

Contact

 | 400-999-6126

 | cn.market@abclonal.com.cn

 | www.abclonal.com.cn

Product Information

Source

Rabbit

Isotype

IgG

Purification

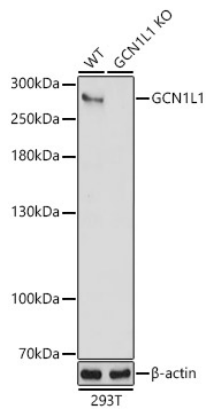
Affinity purification

Storage

Store at -20°C. Avoid freeze / thaw cycles.

Buffer: PBS with 0.01% thimerosal, 50% glycerol, pH7.3.

Validation Data



Western blot analysis of lysates from wild type (WT) and GCN1L1 knockout (KO) 293T (KO) cells, using [KO Validated] GCN1L1 Rabbit pAb (A13075) at 1:3000 dilution.

Secondary antibody: HRP Goat Anti-Rabbit IgG (H+L) (AS014) at 1:10000 dilution.

Lysates/proteins: 25µg per lane.

Blocking buffer: 3% nonfat dry milk in TBST.

Detection: ECL Basic Kit (RM00020).

Exposure time: 30s.