

# IL1RAPL2 Rabbit pAb

**Catalog No.: A13084**

## Basic Information

### Observed MW

80kDa

### Calculated MW

79kDa

### Category

Primary antibody

### Applications

ELISA, WB

### Cross-Reactivity

Human

## Background

The protein encoded by this gene is a member of the interleukin 1 receptor family. This protein is similar to the interleukin 1 accessory proteins, and is most closely related to interleukin 1 receptor accessory protein-like 1 (IL1RAPL1). This gene and IL1RAPL1 are located at a region on chromosome X that is associated with X-linked non-syndromic cognitive disability.

## Recommended Dilutions

**WB** 1:1000 - 1:2000

## Immunogen Information

### Gene ID

26280

### Swiss Prot

Q9NP60

### Immunogen

Recombinant fusion protein containing a sequence corresponding to amino acids 387-686 of human IL1RAPL2 (NP\_059112.1).

### Synonyms

IL1R9; IL-1R9; TIGIRR-1; IL1RAPL-2; IL1RAPL2

## Contact

 | 400-999-6126

 | [cn.market@abclonal.com.cn](mailto:cn.market@abclonal.com.cn)

 | [www.abclonal.com.cn](http://www.abclonal.com.cn)

## Product Information

### Source

Rabbit

### Isotype

IgG

### Purification

Affinity purification

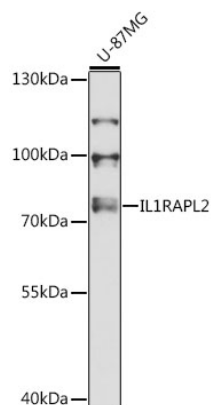
### Storage

Store at -20°C. Avoid freeze / thaw cycles.

Buffer: PBS with 0.01% thimerosal, 50% glycerol, pH7.3.

## Validation Data

---



Western blot analysis of lysates from U-87MG cells, using IL1RAPL2 Rabbit pAb (A13084) at 1:3000 dilution.

Secondary antibody: HRP Goat Anti-Rabbit IgG (H+L) (AS014) at 1:10000 dilution.

Lysates/proteins: 25µg per lane.

Blocking buffer: 3% nonfat dry milk in TBST.

Detection: ECL Basic Kit (RM00020).

Exposure time: 90s.