

ERRFI1 Rabbit pAb

Catalog No.: A13099

Basic Information

Observed MW

50kDa

Calculated MW

51kDa

Category

Primary antibody

Applications

ELISA, WB

Cross-Reactivity

Rat

Background

ERRFI1 is a cytoplasmic protein whose expression is upregulated with cell growth (Wick et al., 1995 [PubMed 7641805]). It shares significant homology with the protein product of rat gene-33, which is induced during cell stress and mediates cell signaling (Makkinje et al., 2000 [PubMed 10749885]; Fiorentino et al., 2000 [PubMed 11003669]).

Recommended Dilutions

WB 1:500 - 1:2000

Immunogen Information

Gene ID

54206

Swiss Prot

Q9UJM3

Immunogen

Recombinant fusion protein containing a sequence corresponding to amino acids 223-462 of human ERRFI1 (NP_061821.1).

Synonyms

MIG6; RALT; MIG-6; GENE-33; ERRFI1

Contact

☎ | 400-999-6126

✉ | cn.market@abclonal.com.cn

🌐 | www.abclonal.com.cn

Product Information

Source

Rabbit

Isotype

IgG

Purification

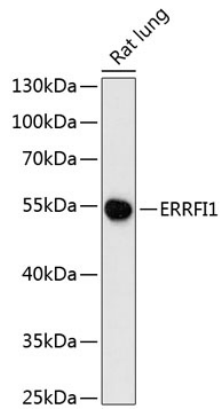
Affinity purification

Storage

Store at -20°C. Avoid freeze / thaw cycles.

Buffer: PBS with 0.01% thimerosal, 50% glycerol, pH7.3.

Validation Data



Western blot analysis of lysates from rat lung, using ERRFI1 Rabbit pAb (A13099) at 1:3000 dilution.
Secondary antibody: HRP Goat Anti-Rabbit IgG (H+L) (AS014) at 1:10000 dilution.
Lysates/proteins: 25µg per lane.
Blocking buffer: 3% nonfat dry milk in TBST.
Detection: ECL Enhanced Kit (RM00021).
Exposure time: 5min.