

MSL2 Rabbit pAb

Catalog No.: A13103

Basic Information

Observed MW

62kDa

Calculated MW

63kDa

Category

Primary antibody

Applications

ELISA, WB

Cross-Reactivity

Human, Mouse, Rat

Background

Predicted to enable ubiquitin protein ligase activity. Involved in histone H4-K16 acetylation. Part of MSL complex.

Recommended Dilutions

WB 1:500 - 1:2000

Immunogen Information

Gene ID

55167

Swiss Prot

Q9HCI7

Immunogen

Recombinant fusion protein containing a sequence corresponding to amino acids 328-577 of human MSL2 (NP_060603.2).

Synonyms

MSL-2; MSL2L1; RNF184; MSL2

Contact

 | 400-999-6126

 | cn.market@abclonal.com.cn

 | www.abclonal.com.cn

Product Information

Source

Rabbit

Isotype

IgG

Purification

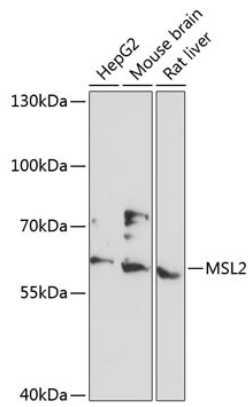
Affinity purification

Storage

Store at -20°C. Avoid freeze / thaw cycles.

Buffer: PBS with 0.01% thimerosal, 50% glycerol, pH7.3.

Validation Data



Western blot analysis of various lysates using MSL2 Rabbit pAb (A13103) at 1:3000 dilution.
Secondary antibody: HRP Goat Anti-Rabbit IgG (H+L) (AS014) at 1:10000 dilution.
Lysates/proteins: 25 μ g per lane.
Blocking buffer: 3% nonfat dry milk in TBST.
Detection: ECL Basic Kit (RM00020).
Exposure time: 10s.