

# CWC22 Rabbit pAb

Catalog No.: A13116

## Basic Information

### Observed MW

110kDa

### Calculated MW

105kDa

### Category

Primary antibody

### Applications

ELISA, WB

### Cross-Reactivity

Mouse

## Background

Enables RNA binding activity. Involved in mRNA splicing, via spliceosome. Located in cytosol and nuclear speck. Part of U2-type catalytic step 1 spliceosome; U2-type catalytic step 2 spliceosome; and U2-type pre-catalytic spliceosome.

## Recommended Dilutions

WB 1:1000 - 1:2000

## Immunogen Information

### Gene ID

57703

### Swiss Prot

Q9HCG8

### Immunogen

Recombinant fusion protein containing a sequence corresponding to amino acids 639-908 of human CWC22 (NP\_065994.1).

### Synonyms

NCM; fSAPb; EIF4GL; CWC22

## Contact

 | 400-999-6126

 | [cn.market@abclonal.com.cn](mailto:cn.market@abclonal.com.cn)

 | [www.abclonal.com.cn](http://www.abclonal.com.cn)

## Product Information

### Source

Rabbit

### Isotype

IgG

### Purification

Affinity purification

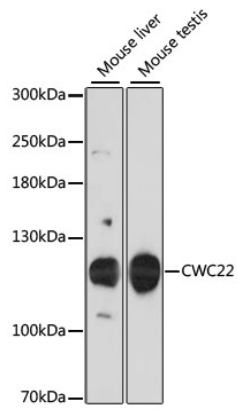
### Storage

Store at -20°C. Avoid freeze / thaw cycles.

Buffer: PBS with 0.01% thimerosal, 50% glycerol, pH7.3.

## Validation Data

---



Western blot analysis of various lysates using CWC22 Rabbit pAb (A13116) at 1:3000 dilution.  
Secondary antibody: HRP Goat Anti-Rabbit IgG (H+L) (AS014) at 1:10000 dilution.  
Lysates/proteins: 25 $\mu$ g per lane.  
Blocking buffer: 3% nonfat dry milk in TBST.  
Detection: ECL Basic Kit (RM00020).  
Exposure time: 30s.