

NLRC4 Rabbit pAb

Catalog No.: A13117 **4 Publications**

Basic Information

Observed MW

102kDa

Calculated MW

116kDa

Category

Primary antibody

Applications

ELISA, WB, IHC-P

Cross-Reactivity

Human, Mouse

Background

Enables identical protein binding activity. Involved in several processes, including positive regulation of interleukin-1 beta production; protein homooligomerization; and response to bacterium. Acts upstream of or within regulation of apoptotic process and regulation of cysteine-type endopeptidase activity involved in apoptotic process. Located in cytosol. Part of IPAF inflammasome complex. Used to study familial cold autoinflammatory syndrome 4. Human ortholog(s) of this gene implicated in familial cold autoinflammatory syndrome 4. Orthologous to human NLRC4 (NLR family CARD domain containing 4).

Recommended Dilutions

WB	1:500 - 1:2000
IHC-P	1:50 - 1:200

Immunogen Information

Gene ID

268973

Swiss Prot

Q9NPP4

Immunogen

Recombinant fusion protein containing a sequence corresponding to amino acids 89-159 of Mouse NLRC4 (NP_001028539.1).

Synonyms

CLAN; IPAF; CLAN1; CLANA; CLANB; CLANC; CLAND; Card12; 9530011P19Rik; NLRC4

Contact

☎ | 400-999-6126

✉ | cn.market@abclonal.com.cn

🌐 | www.abclonal.com.cn

Product Information

Source

Rabbit

Isotype

IgG

Purification

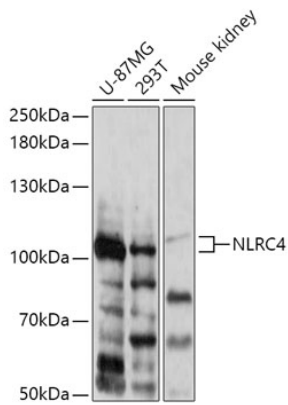
Affinity purification

Storage

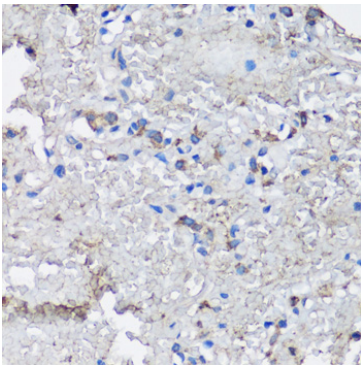
Store at -20°C. Avoid freeze / thaw cycles.

Buffer: PBS with 0.05% proclin300, 50% glycerol, pH7.3.

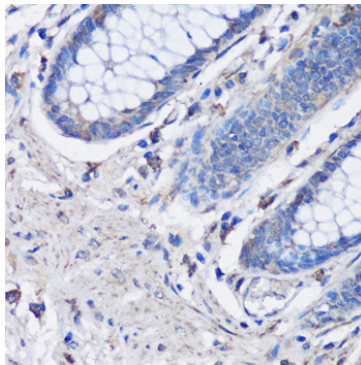
Validation Data



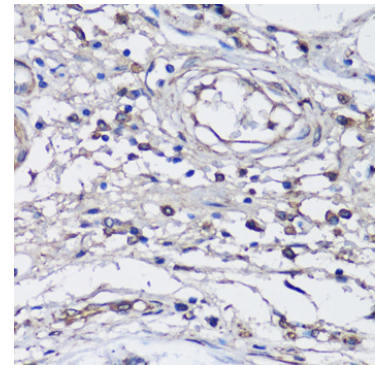
Western blot analysis of various lysates using NLRC4 Rabbit pAb (A13117) at 1:1000 dilution. Secondary antibody: HRP Goat Anti-Rabbit IgG (H+L) (AS014) at 1:10000 dilution. Lysates/proteins: 25µg per lane. Blocking buffer: 3% nonfat dry milk in TBST. Detection: ECL Basic Kit (RM00020). Exposure time: 120s.



Immunohistochemistry analysis of paraffin-embedded Human lung using NLRC4 Rabbit pAb (A13117) at dilution of 1:100 (40x lens). Perform microwave antigen retrieval with 10 mM PBS buffer pH 7.2 before commencing with IHC staining protocol.



Immunohistochemistry analysis of paraffin-embedded Human colon using NLRC4 Rabbit pAb (A13117) at dilution of 1:100 (40x lens). Perform microwave antigen retrieval with 10 mM PBS buffer pH 7.2 before commencing with IHC staining protocol.



Immunohistochemistry analysis of paraffin-embedded Human gastric cancer using NLRC4 Rabbit pAb (A13117) at dilution of 1:100 (40x lens). Perform microwave antigen retrieval with 10 mM PBS buffer pH 7.2 before commencing with IHC staining protocol.