

# MUL1 Rabbit pAb

Catalog No.: A13125

## Basic Information

### Observed MW

45kDa

### Calculated MW

40kDa

### Category

Primary antibody

### Applications

ELISA, WB

### Cross-Reactivity

Human, Mouse

## Background

Enables several functions, including p53 binding activity; ubiquitin protein ligase binding activity; and ubiquitin-like protein transferase activity. Involved in several processes, including negative regulation of defense response; positive regulation of cellular protein metabolic process; and regulation of mitochondrion organization. Located in several cellular components, including mitochondrion; neuronal cell body; and peroxisome. Is integral component of mitochondrial outer membrane.

## Recommended Dilutions

WB 1:1000 - 1:2000

## Immunogen Information

### Gene ID

79594

### Swiss Prot

Q969V5

### Immunogen

Recombinant fusion protein containing a sequence corresponding to amino acids 1-352 of human MUL1 (NP\_078820.2).

### Synonyms

GIDE; MAPL; MULAN; RNF218; C1orf166; MUL1

## Contact

☎ | 400-999-6126

✉ | [cn.market@abclonal.com.cn](mailto:cn.market@abclonal.com.cn)

🌐 | [www.abclonal.com.cn](http://www.abclonal.com.cn)

## Product Information

### Source

Rabbit

### Isotype

IgG

### Purification

Affinity purification

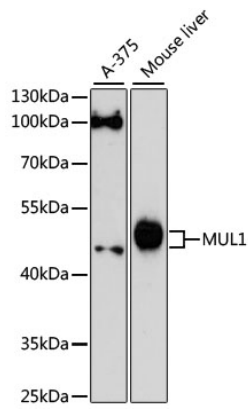
### Storage

Store at -20°C. Avoid freeze / thaw cycles.

Buffer: PBS with 0.01% thimerosal, 50% glycerol, pH7.3.

## Validation Data

---



Western blot analysis of various lysates using MUL1 Rabbit pAb (A13125) at 1:3000 dilution.  
Secondary antibody: HRP Goat Anti-Rabbit IgG (H+L) (AS014) at 1:10000 dilution.  
Lysates/proteins: 25µg per lane.  
Blocking buffer: 3% nonfat dry milk in TBST.  
Detection: ECL Enhanced Kit (RM00021).  
Exposure time: 90s.