

REG4 Rabbit pAb

Catalog No.: A13129 **1 Publications**

Basic Information

Observed MW

18kDa

Calculated MW

18kDa

Category

Primary antibody

Applications

ELISA, WB

Cross-Reactivity

Mouse, Rat

Background

Enables heparin binding activity and mannan binding activity. Predicted to act upstream of or within response to bacterium. Located in cytoplasm.

Recommended Dilutions

WB 1:500 - 1:1000

Immunogen Information

Gene ID

83998

Swiss Prot

Q9BYZ8

Immunogen

Recombinant fusion protein containing a sequence corresponding to amino acids 23-158 of human REG4 (NP_114433.1).

Synonyms

GISP; RELP; REG-IV; REG4

Contact

☎ | 400-999-6126

✉ | cn.market@abclonal.com.cn

🌐 | www.abclonal.com.cn

Product Information

Source

Rabbit

Isotype

IgG

Purification

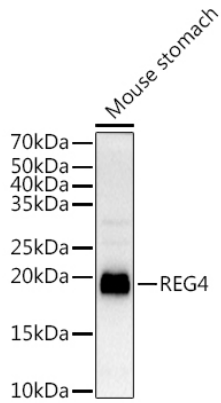
Affinity purification

Storage

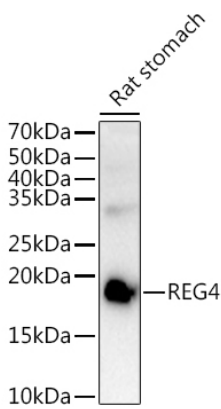
Store at -20°C. Avoid freeze / thaw cycles.

Buffer: PBS with 0.01% thimerosal, 50% glycerol, pH7.3.

Validation Data



Western blot analysis of lysates from Mouse stomach, using REG4 Rabbit pAb (A13129) at 1:1000 dilution.
Secondary antibody: HRP Goat Anti-Rabbit IgG (H+L) (AS014) at 1:10000 dilution.
Lysates/proteins: 25 μ g per lane.
Blocking buffer: 3% nonfat dry milk in TBST.
Detection: ECL Basic Kit (RM00020).
Exposure time: 10s.



Western blot analysis of lysates from Rat stomach, using REG4 Rabbit pAb (A13129) at 1:1000 dilution.
Secondary antibody: HRP Goat Anti-Rabbit IgG (H+L) (AS014) at 1:10000 dilution.
Lysates/proteins: 25 μ g per lane.
Blocking buffer: 3% nonfat dry milk in TBST.
Detection: ECL Basic Kit (RM00020).
Exposure time: 180s.