

ZFYVE16 Rabbit pAb

Catalog No.: A13154

Basic Information

Observed MW

169kDa

Calculated MW

166kDa

Category

Primary antibody

Applications

ELISA, WB

Cross-Reactivity

Human

Background

Predicted to enable 1-phosphatidylinositol binding activity and phosphatidylinositol-3,4,5-trisphosphate binding activity. Predicted to be involved in endosomal transport and protein targeting to lysosome. Predicted to be located in cytosol and early endosome. Predicted to be active in early endosome membrane. Is expressed in genitourinary system. Orthologous to human ZFYVE16 (zinc finger FYVE-type containing 16).

Recommended Dilutions

WB 1:1000 - 1:2000

Immunogen Information

Gene ID

218441

Swiss Prot

Immunogen

Recombinant fusion protein containing a sequence corresponding to amino acids 1-300 of mouse ZFYVE16 (NP_775568.1).

Synonyms

mKIAA0305; B130031L15; B130024H06Rik; ZFYVE16

Contact

☎ | 400-999-6126

✉ | cn.market@abclonal.com.cn

🌐 | www.abclonal.com.cn

Product Information

Source

Rabbit

Isotype

IgG

Purification

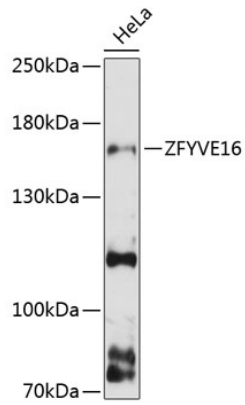
Affinity purification

Storage

Store at -20°C. Avoid freeze / thaw cycles.

Buffer: PBS with 0.01% thimerosal, 50% glycerol, pH7.3.

Validation Data



Western blot analysis of lysates from HeLa cells, using ZFYVE16 Rabbit pAb (A13154) at 1:3000 dilution.
Secondary antibody: HRP Goat Anti-Rabbit IgG (H+L) (AS014) at 1:10000 dilution.
Lysates/proteins: 25µg per lane.
Blocking buffer: 3% nonfat dry milk in TBST.
Detection: ECL Basic Kit (RM00020).
Exposure time: 90s.