

SAAL1 Rabbit pAb

Catalog No.: A13183

Basic Information

Observed MW

54-58kDa

Calculated MW

54kDa

Category

Primary antibody

Applications

ELISA, WB

Cross-Reactivity

Human, Mouse, Rat

Background

Acts upstream of or within positive regulation of synoviocyte proliferation. Located in nucleoplasm.

Recommended Dilutions

WB 1:500 - 1:2000

Immunogen Information

Gene ID

113174

Swiss Prot

Q96ER3

Immunogen

Recombinant fusion protein containing a sequence corresponding to amino acids 175-474 of human SAAL1 (NP_612430.2).

Synonyms

SPACIA1; SAAL1

Contact

☎ | 400-999-6126

✉ | cn.market@abclonal.com.cn

🌐 | www.abclonal.com.cn

Product Information

Source

Rabbit

Isotype

IgG

Purification

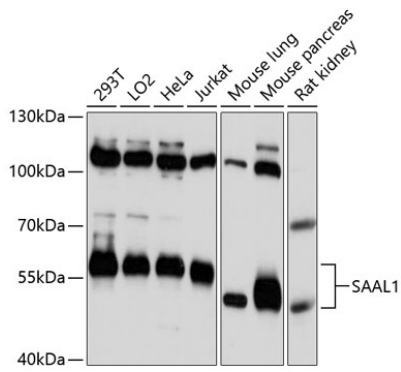
Affinity purification

Storage

Store at -20°C. Avoid freeze / thaw cycles.

Buffer: PBS with 0.01% thimerosal, 50% glycerol, pH7.3.

Validation Data



Western blot analysis of various lysates using SAAL1 Rabbit pAb (A13183) at 1:3000 dilution.
Secondary antibody: HRP Goat Anti-Rabbit IgG (H+L) (AS014) at 1:10000 dilution.
Lysates/proteins: 25µg per lane.
Blocking buffer: 3% nonfat dry milk in TBST.
Detection: ECL Enhanced Kit (RM00021).
Exposure time: 10s.