

# CRISPLD2 Rabbit pAb

Catalog No.: A13195

## Basic Information

### Observed MW

56kDa

### Calculated MW

56kDa

### Category

Primary antibody

### Applications

ELISA, WB

### Cross-Reactivity

Mouse, Rat

## Background

Predicted to enable glycosaminoglycan binding activity. Involved in face morphogenesis. Located in transport vesicle.

## Recommended Dilutions

WB 1:500 - 1:2000

## Immunogen Information

### Gene ID

83716

### Swiss Prot

Q9H0B8

### Immunogen

Recombinant fusion protein containing a sequence corresponding to amino acids 140-430 of human CRISPLD2 (NP\_113664.1).

### Synonyms

LGL1; CRISP11; LCRISP2; CRISPLD2

## Contact

 | 400-999-6126

 | [cn.market@abclonal.com.cn](mailto:cn.market@abclonal.com.cn)

 | [www.abclonal.com.cn](http://www.abclonal.com.cn)

## Product Information

### Source

Rabbit

### Isotype

IgG

### Purification

Affinity purification

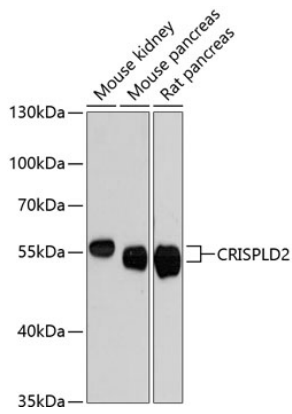
### Storage

Store at -20°C. Avoid freeze / thaw cycles.

Buffer: PBS with 0.01% thimerosal, 50% glycerol, pH7.3.

## Validation Data

---



Western blot analysis of various lysates using CRISPLD2 Rabbit pAb (A13195) at 1:3000 dilution.  
Secondary antibody: HRP Goat Anti-Rabbit IgG (H+L) (AS014) at 1:10000 dilution.  
Lysates/proteins: 25µg per lane.  
Blocking buffer: 3% nonfat dry milk in TBST.  
Detection: ECL Enhanced Kit (RM00021).  
Exposure time: 90s.