

RBM11 Rabbit pAb

Catalog No.: A13216

Basic Information

Observed MW

32kDa

Calculated MW

32kDa

Category

Primary antibody

Applications

WB,ELISA

Cross-Reactivity

Human, Mouse, Rat

Background

Enables poly(U) RNA binding activity and protein homodimerization activity. Acts upstream of or within cellular response to oxidative stress and regulation of alternative mRNA splicing, via spliceosome. Located in nuclear speck.

Recommended Dilutions

WB 1:500 - 1:2000

ELISA Recommended starting concentration is 1 µg/mL. Please optimize the concentration based on your specific assay requirements.

Immunogen Information

Gene ID

54033

Swiss Prot

P57052

Immunogen

Recombinant protein (or fragment). This information is considered to be commercially sensitive.

Synonyms

RBM11

Contact

☎ | 400-999-6126

✉ | cn.market@abclonal.com.cn

🌐 | www.abclonal.com.cn

Product Information

Source

Rabbit

Isotype

IgG

Purification

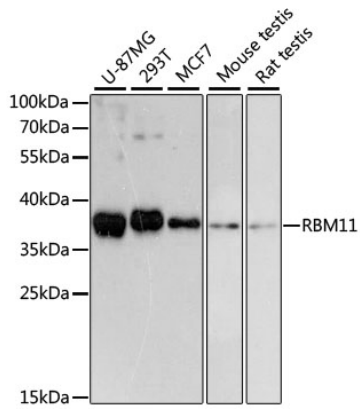
Affinity purification

Storage

Store at -20°C. Avoid freeze / thaw cycles.

Buffer: PBS with 0.01% thimerosal, 50% glycerol, pH7.3.

Validation Data



Western blot analysis of various lysates using RBM11 Rabbit pAb (A13216) at 1:3000 dilution.
Secondary antibody: HRP-conjugated Goat anti-Rabbit IgG (H+L) (AS014) at 1:10000 dilution.
Lysates/proteins: 25µg per lane.
Blocking buffer: 3% nonfat dry milk in TBST.
Detection: ECL Basic Kit (RM00020).
Exposure time: 90s.