

# PID1 Rabbit pAb

Catalog No.: A13220

## Basic Information

### Observed MW

27kDa

### Calculated MW

28kDa

### Category

Primary antibody

### Applications

ELISA, WB, IP

### Cross-Reactivity

Human, Mouse, Rat

## Background

Involved in several processes, including mitochondrion morphogenesis; negative regulation of phosphate metabolic process; and positive regulation of macromolecule metabolic process. Located in cytoplasm.

## Recommended Dilutions

**WB** 1:500 - 1:2000

**IP** 0.5µg-4µg antibody for  
25µg-100µg extracts of  
whole cells

## Immunogen Information

### Gene ID

55022

### Swiss Prot

Q7Z2X4

### Immunogen

Recombinant fusion protein containing a sequence corresponding to amino acids 124-248 of human PID1 (NP\_060403.3).

### Synonyms

PCLI1; NYGGF4; P-CLI1; HMFN2073; PID1

## Contact

☎ | 400-999-6126

✉ | [cn.market@abclonal.com.cn](mailto:cn.market@abclonal.com.cn)

🌐 | [www.abclonal.com.cn](http://www.abclonal.com.cn)

## Product Information

### Source

Rabbit

### Isotype

IgG

### Purification

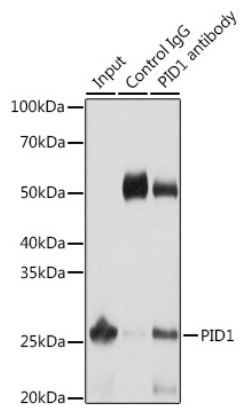
Affinity purification

### Storage

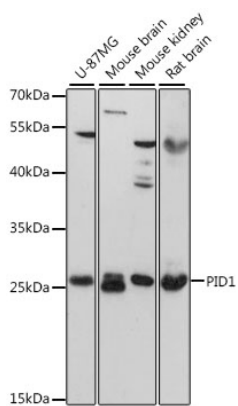
Store at -20°C. Avoid freeze / thaw cycles.

Buffer: PBS with 0.01% thimerosal, 50% glycerol, pH7.3.

## Validation Data



Immunoprecipitation analysis of 25 µg extracts of Mouse liver cells using 3 µg PID1 antibody (A13220). Western blot was performed from the immunoprecipitate using PID1 antibody (A13220) at a dilution of 1:1000.



Western blot analysis of various lysates using PID1 Rabbit pAb (A13220) at 1:3000 dilution. Secondary antibody: HRP Goat Anti-Rabbit IgG (H+L) (AS014) at 1:10000 dilution. Lysates/proteins: 25µg per lane. Blocking buffer: 3% nonfat dry milk in TBST. Detection: ECL Enhanced Kit (RM00021). Exposure time: 30s.