

# THOC3 Rabbit pAb

Catalog No.: A13230

## Basic Information

### Observed MW

39kDa

### Calculated MW

39kDa

### Category

Primary antibody

### Applications

WB, ELISA

### Cross-Reactivity

Human, Mouse

## Background

This gene encodes a component of the nuclear THO transcription elongation complex, which is part of the larger transcription export (TREX) complex that couples messenger RNA processing and export. In humans, the transcription export complex is recruited to the 5'-end of messenger RNAs in a splicing- and cap-dependent manner. Studies of a related complex in mouse suggest that the metazoan transcription export complex is involved in cell differentiation and development. A pseudogene of this gene has been defined on chromosome 5.

## Recommended Dilutions

**WB** 1:500 - 1:2000

**ELISA** Recommended starting concentration is 1 µg/mL. Please optimize the concentration based on your specific assay requirements.

## Immunogen Information

### Gene ID

84321

### Swiss Prot

Q96J01

### Immunogen

Recombinant protein (or fragment). This information is considered to be commercially sensitive.

### Synonyms

THO3; hTREX45; THOC3

## Contact

 | 400-999-6126

 | [cn.market@abclonal.com.cn](mailto:cn.market@abclonal.com.cn)

 | [www.abclonal.com.cn](http://www.abclonal.com.cn)

## Product Information

### Source

Rabbit

### Isotype

IgG

### Purification

Affinity purification

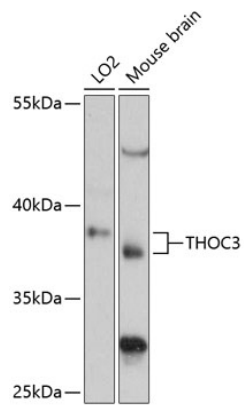
### Storage

Store at -20°C. Avoid freeze / thaw cycles.

Buffer: PBS with 0.01% thimerosal, 50% glycerol, pH 7.3.

## Validation Data

---



Western blot analysis of various lysates using THOC3 Rabbit pAb (A13230) at 1:3000 dilution.  
Secondary antibody: HRP-conjugated Goat anti-Rabbit IgG (H+L) (AS014) at 1:10000 dilution.  
Lysates/proteins: 25 $\mu$ g per lane.  
Blocking buffer: 3% nonfat dry milk in TBST.  
Detection: ECL Basic Kit (RM00020).  
Exposure time: 90s.