

# SYNE3 Rabbit pAb

Catalog No.: A13237

## Basic Information

### Observed MW

112kDa

### Calculated MW

112kDa

### Category

Primary antibody

### Applications

ELISA, WB, IF/ICC

### Cross-Reactivity

Human, Mouse

## Background

Enables actin filament binding activity and cytoskeleton-nuclear membrane anchor activity. Involved in cytoskeleton organization; establishment of protein localization to membrane; and regulation of cell shape. Located in nuclear membrane. Part of meiotic nuclear membrane microtubule tethering complex. Biomarker of Huntington's disease.

## Recommended Dilutions

|               |                |
|---------------|----------------|
| <b>WB</b>     | 1:500 - 1:2000 |
| <b>IF/ICC</b> | 1:50 - 1:200   |

## Immunogen Information

### Gene ID

161176

### Swiss Prot

Q6ZM23

### Immunogen

Recombinant fusion protein containing a sequence corresponding to amino acids 740-920 of human SYNE3 (NP\_689805.3).

### Synonyms

KASH3; NET53; Nesp3; C14orf49; C14orf139; LINC00341; NCRNA00341; SYNE3

## Contact

|  |                           |
|--|---------------------------|
|  | 400-999-6126              |
|  | cn.market@abclonal.com.cn |
|  | www.abclonal.com.cn       |

## Product Information

### Source

Rabbit

### Isotype

IgG

### Purification

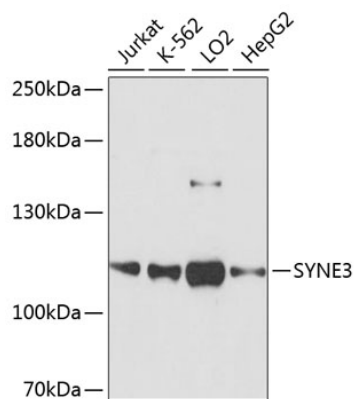
Affinity purification

### Storage

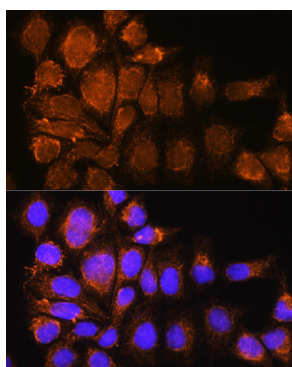
Store at -20°C. Avoid freeze / thaw cycles.

Buffer: PBS with 0.01% thimerosal, 50% glycerol, pH7.3.

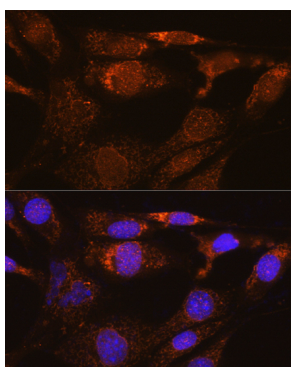
## Validation Data



Western blot analysis of various lysates using SYNE3 Rabbit pAb (A13237) at 1:3000 dilution.  
Secondary antibody: HRP Goat Anti-Rabbit IgG (H+L) (AS014) at 1:10000 dilution.  
Lysates/proteins: 25µg per lane.  
Blocking buffer: 3% nonfat dry milk in TBST.  
Detection: ECL Basic Kit (RM00020).  
Exposure time: 90s.



Immunofluorescence analysis of HeLa cells using SYNE3 Rabbit pAb (A13237) at dilution of 1:100. Secondary antibody: Cy3 Goat Anti-Rabbit IgG (H+L) (AS007) at 1:500 dilution. Blue: DAPI for nuclear staining.



Immunofluorescence analysis of NIH/3T3 cells using SYNE3 Rabbit pAb (A13237) at dilution of 1:100. Secondary antibody: Cy3 Goat Anti-Rabbit IgG (H+L) (AS007) at 1:500 dilution. Blue: DAPI for nuclear staining.