

PAPD4 Rabbit pAb

Catalog No.: A13238

Basic Information

Observed MW

54kDa

Calculated MW

56kDa

Category

Primary antibody

Applications

WB,ELISA

Cross-Reactivity

Human, Mouse, Rat

Background

Enables 5'-3' RNA polymerase activity and polynucleotide adenylyltransferase activity. Involved in RNA metabolic process and negative regulation of RNA catabolic process. Predicted to be located in nucleus. Predicted to be part of nuclear RNA-directed RNA polymerase complex. Predicted to be active in cytosol.

Recommended Dilutions

WB 1:500 - 1:2000

ELISA Recommended starting concentration is 1 µg/mL. Please optimize the concentration based on your specific assay requirements.

Immunogen Information

Gene ID

167153

Swiss Prot

Q6PIY7

Immunogen

Recombinant protein (or fragment). This information is considered to be commercially sensitive.

Synonyms

APD4; GLD2; TUT2; PAPD4

Contact

☎ | 400-999-6126

✉ | cn.market@abclonal.com.cn

🌐 | www.abclonal.com.cn

Product Information

Source

Rabbit

Isotype

IgG

Purification

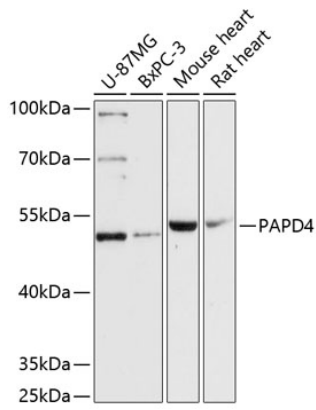
Affinity purification

Storage

Store at -20°C. Avoid freeze / thaw cycles.

Buffer: PBS with 0.01% thimerosal, 50% glycerol, pH 7.3.

Validation Data



Western blot analysis of various lysates using PAPD4 Rabbit pAb (A13238) at 1:3000 dilution. Secondary antibody: HRP-conjugated Goat anti-Rabbit IgG (H+L) (AS014) at 1:10000 dilution. Lysates/proteins: 25µg per lane. Blocking buffer: 3% nonfat dry milk in TBST. Detection: ECL Basic Kit (RM00020). Exposure time: 90s.