

TBCB Rabbit pAb

Catalog No.: A13248 **5 Publications**

Basic Information

Observed MW

37kDa

Calculated MW

27kDa

Category

Primary antibody

Applications

ELISA, WB, IHC-P

Cross-Reactivity

Human, Mouse, Rat

Background

Predicted to be involved in cell differentiation and nervous system development. Located in cytosol.

Recommended Dilutions

WB	1:1000 - 1:2000
IHC-P	1:50 - 1:200

Immunogen Information

Gene ID

1155

Swiss Prot

Q99426

Immunogen

Recombinant fusion protein containing a sequence corresponding to amino acids 1-244 of human TBCB (NP_001272.2).

Synonyms

CG22; CKAP1; CKAPI; TBCB

Contact

 | 400-999-6126

 | cn.market@abclonal.com.cn

 | www.abclonal.com.cn

Product Information

Source

Rabbit

Isotype

IgG

Purification

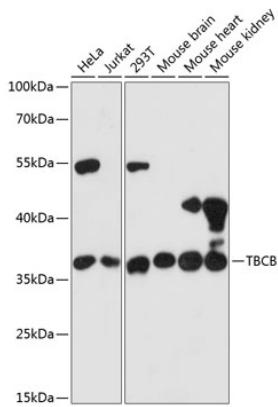
Affinity purification

Storage

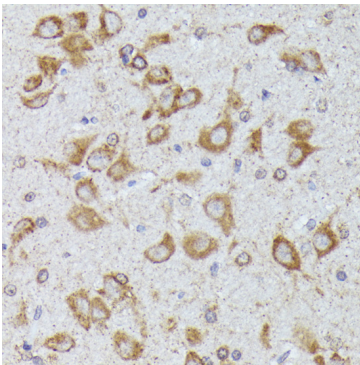
Store at -20°C. Avoid freeze / thaw cycles.

Buffer: PBS with 0.01% thimerosal, 50% glycerol, pH7.3.

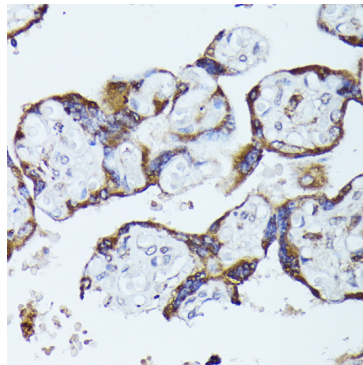
Validation Data



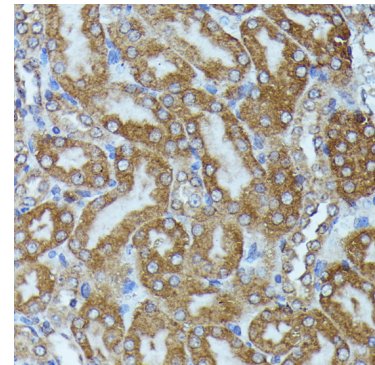
Western blot analysis of various lysates using TBCB Rabbit pAb (A13248) at 1:3000 dilution. Secondary antibody: HRP Goat Anti-Rabbit IgG (H+L) (AS014) at 1:10000 dilution. Lysates/proteins: 25µg per lane. Blocking buffer: 3% nonfat dry milk in TBST. Detection: ECL Basic Kit (RM00020). Exposure time: 30s.



Immunohistochemistry analysis of paraffin-embedded rat brain using TBCB Rabbit pAb (A13248) at dilution of 1:100 (40x lens). Perform microwave antigen retrieval with 10 mM PBS buffer pH 7.2 before commencing with IHC staining protocol.



Immunohistochemistry analysis of paraffin-embedded human placenta using TBCB Rabbit pAb (A13248) at dilution of 1:100 (40x lens). Perform microwave antigen retrieval with 10 mM PBS buffer pH 7.2 before commencing with IHC staining protocol.



Immunohistochemistry analysis of paraffin-embedded mouse kidney using TBCB Rabbit pAb (A13248) at dilution of 1:100 (40x lens). Perform microwave antigen retrieval with 10 mM PBS buffer pH 7.2 before commencing with IHC staining protocol.