

YTHDF1 Rabbit pAb

Catalog No.: A13260 **2 Publications**

Basic Information

Observed MW

70kDa

Calculated MW

61kDa

Category

Primary antibody

Applications

WB,IF/ICC,IP,ELISA

Cross-Reactivity

Human, Mouse, Rat

Background

Enables N6-methyladenosine-containing RNA binding activity and ribosome binding activity. Involved in mRNA destabilization; positive regulation of translational initiation; and stress granule assembly. Located in P-body and cytoplasmic stress granule.

Recommended Dilutions

WB 1:100 - 1:500

IF/ICC 1:50 - 1:200

IP 1:50 - 1:200

ELISA Recommended starting concentration is 1 µg/mL. Please optimize the concentration based on your specific assay requirements.

Immunogen Information

Gene ID

54915

Swiss Prot

Q9BYJ9

Immunogen

Recombinant protein (or fragment). This information is considered to be commercially sensitive.

Synonyms

DF1; C20orf21; YTHDF1

Contact

☎ | 400-999-6126

✉ | cn.market@abclonal.com.cn

🌐 | www.abclonal.com.cn

Product Information

Source

Rabbit

Isotype

IgG

Purification

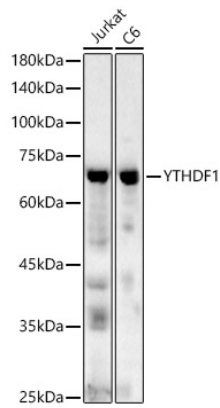
Affinity purification

Storage

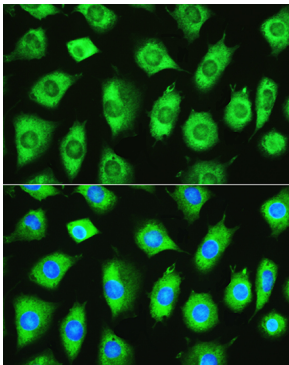
Store at -20°C. Avoid freeze / thaw cycles.

Buffer: Buffer: PBS containing 50% glycerol, preserved with proclin300 or sodium azide (as specified on the Certificate of Analysis), pH 7.3.

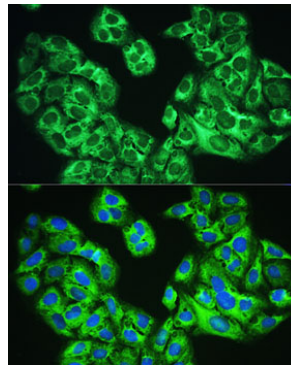
Validation Data



Western blot analysis of various lysates, using YTHDF1 Rabbit pAb (A13260) at 1:500 dilution. Secondary antibody: HRP-conjugated Goat anti-Rabbit IgG (H+L) (AS014) at 1:10000 dilution. Lysates/proteins: 25µg per lane. Blocking buffer: 3% nonfat dry milk in TBST. Detection: ECL Basic Kit (RM00020). Exposure time: 60s.



Immunofluorescence analysis of L929 cells using YTHDF1 Rabbit pAb (A13260) at dilution of 1:100. Secondary antibody: Cy3-conjugated Goat anti-Rabbit IgG (H+L) (AS007) at 1:500 dilution. Blue: DAPI for nuclear staining.



Immunofluorescence analysis of U2OS cells using YTHDF1 Rabbit pAb (A13260) at dilution of 1:100. Secondary antibody: Cy3-conjugated Goat anti-Rabbit IgG (H+L) (AS007) at 1:500 dilution. Blue: DAPI for nuclear staining.