

CTCF Rabbit pAb

Catalog No.: A13272 **1 Publications**

Basic Information

Observed MW

140kDa

Calculated MW

83kDa

Category

Primary antibody

Applications

WB,IHC-P,IF/ICC,IP,(ELISA),ChIP

Cross-Reactivity

Human, Mouse, Rat

Background

This gene is a member of the BORIS + CTCF gene family and encodes a transcriptional regulator protein with 11 highly conserved zinc finger (ZF) domains. This nuclear protein is able to use different combinations of the ZF domains to bind different DNA target sequences and proteins. Depending upon the context of the site, the protein can bind a histone acetyltransferase (HAT)-containing complex and function as a transcriptional activator or bind a histone deacetylase (HDAC)-containing complex and function as a transcriptional repressor. If the protein is bound to a transcriptional insulator element, it can block communication between enhancers and upstream promoters, thereby regulating imprinted expression. Mutations in this gene have been associated with invasive breast cancers, prostate cancers, and Wilms' tumors. Alternatively spliced transcript variants encoding different isoforms have been found for this gene.

Recommended Dilutions

WB	1:1000 - 1:2000
IHC-P	1:50 - 1:200
IF/ICC	1:50 - 1:200
IP	0.5µg-4µg antibody for 200µg-400µg extracts of whole cells
ELISA	Recommended starting concentration is 1 µg/mL. Please optimize the concentration based on your specific assay requirements.
ChIP	3µg antibody for 10µg-15µg of Chromatin

Immunogen Information

Gene ID

10664

Swiss Prot

P49711

Immunogen

Recombinant fusion protein containing a sequence corresponding to amino acids 1-260 of human CTCF (NP_006556.1).

Synonyms

MRD21; FAP108; CFAP108; CTCF

Product Information

Source

Rabbit

Isotype

IgG

Purification

Affinity purification

Storage

Store at -20°C. Avoid freeze / thaw cycles.

Buffer: PBS with 0.01% thimerosal,50% glycerol,pH7.3.

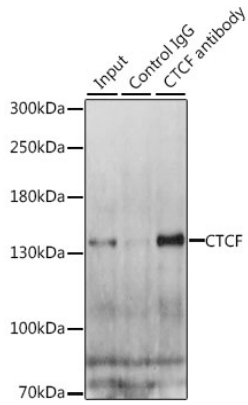
Contact

 | 400-999-6126

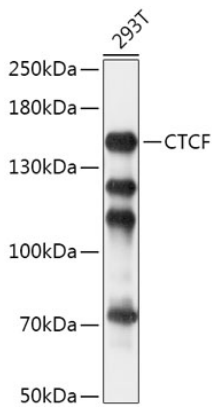
 | cn.market@abclonal.com.cn

 | www.abclonal.com.cn

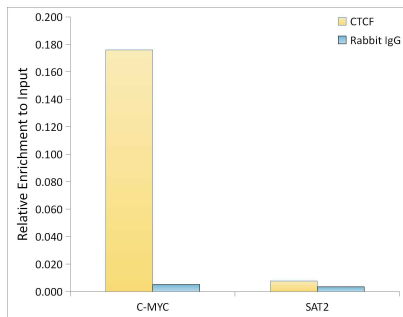
Validation Data



Immunoprecipitation analysis of 200 µg extracts of HeLa cells, using 3 µg CTCF antibody (A13272). Western blot was performed from the immunoprecipitate using CTCF antibody (A13272) at a dilution of 1:1000.

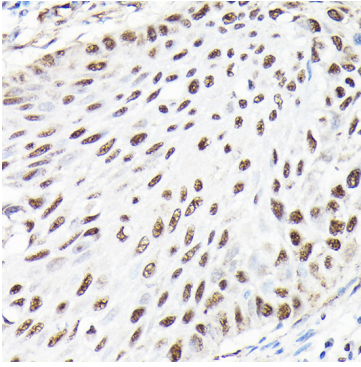


Western blot analysis of lysates from 293T cells, using CTCF Rabbit pAb (A13272) at 1:1000 dilution. Secondary antibody: HRP-conjugated Goat anti-Rabbit IgG (H+L) (AS014) at 1:10000 dilution. Lysates/proteins: 25µg per lane. Blocking buffer: 3% nonfat dry milk in TBST. Detection: ECL Basic Kit (RM00020). Exposure time: 5s.

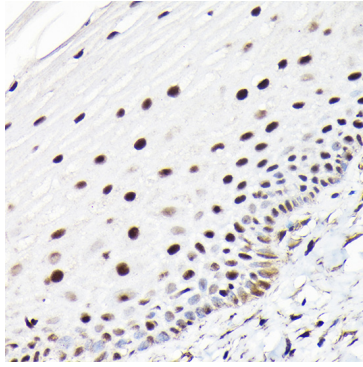


Chromatin immunoprecipitation analysis of extracts of 293T cells, using CTCF antibody (A13272) and rabbit IgG. The amount of immunoprecipitated DNA was checked by quantitative PCR. Histogram was constructed by the ratios of the immunoprecipitated DNA to the input.

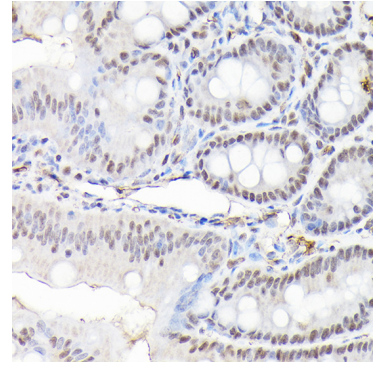
Validation Data



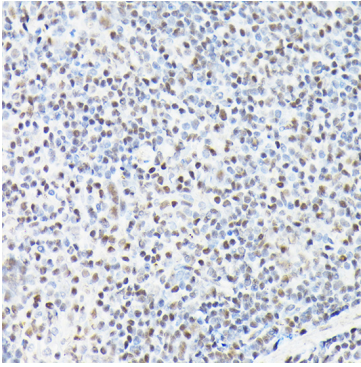
Immunohistochemistry analysis of paraffin-embedded Human lung cancer using CTCF Rabbit pAb (A13272) at dilution of 1:100 (40x lens). High pressure antigen retrieval performed with 0.01M Citrate Bufferr (pH 6.0) prior to IHC staining.



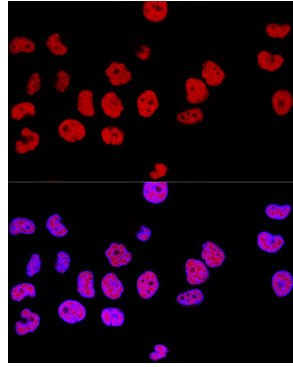
Immunohistochemistry analysis of paraffin-embedded Human normal cervix using CTCF Rabbit pAb (A13272) at dilution of 1:100 (40x lens). High pressure antigen retrieval performed with 0.01M Citrate Bufferr (pH 6.0) prior to IHC staining.



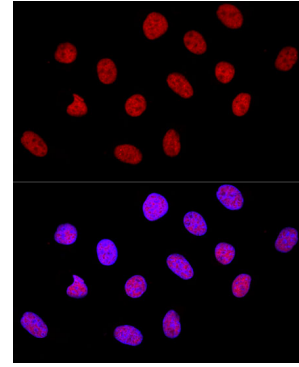
Immunohistochemistry analysis of paraffin-embedded Mouse colon using CTCF Rabbit pAb (A13272) at dilution of 1:100 (40x lens). High pressure antigen retrieval performed with 0.01M Citrate Bufferr (pH 6.0) prior to IHC staining.



Immunohistochemistry analysis of paraffin-embedded Mouse spleen using CTCF Rabbit pAb (A13272) at dilution of 1:100 (40x lens). High pressure antigen retrieval performed with 0.01M Citrate Bufferr (pH 6.0) prior to IHC staining.



Confocal immunofluorescence analysis of HeLa cells using CTCF Rabbit pAb (A13272) at dilution of 1:100. Blue: DAPI for nuclear staining.



Confocal immunofluorescence analysis of U-2 OS cells using CTCF Rabbit pAb (A13272) at dilution of 1:100. Blue: DAPI for nuclear staining.