

# LLGL2 Rabbit pAb

**Catalog No.: A13323**

## Basic Information

### Observed MW

114kDa

### Calculated MW

114kDa

### Category

Primary antibody

### Applications

WB,ELISA

### Cross-Reactivity

Mouse, Rat

## Background

Predicted to enable GTPase activator activity; PDZ domain binding activity; and myosin II binding activity. Acts upstream of or within establishment or maintenance of polarity of embryonic epithelium; labyrinthine layer development; and post-embryonic development. Predicted to be located in cytosol and intracellular membrane-bounded organelle. Predicted to be active in cortical actin cytoskeleton and plasma membrane. Is expressed in several structures, including cardiovascular system; endocrine gland; genitourinary system; gut; and nasal cavity epithelium. Orthologous to human LLGL2 (LLGL scribble cell polarity complex component 2).

## Recommended Dilutions

**WB** 1:500 - 1:2000

**ELISA** Recommended starting concentration is 1 µg/mL. Please optimize the concentration based on your specific assay requirements.

## Immunogen Information

### Gene ID

217325

### Swiss Prot

### Immunogen

A synthetic peptide corresponding to a sequence within amino acids 938-1027 of mouse LLGL2 (NP\_663413.2).

### Synonyms

Lglh2; 9130006H11Rik; LLGL2

## Contact

☎ | 400-999-6126

✉ | [cn.market@abclonal.com.cn](mailto:cn.market@abclonal.com.cn)

🌐 | [www.abclonal.com.cn](http://www.abclonal.com.cn)

## Product Information

### Source

Rabbit

### Isotype

IgG

### Purification

Affinity purification

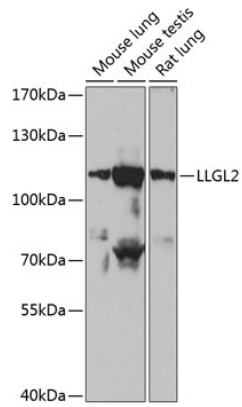
### Storage

Store at -20°C. Avoid freeze / thaw cycles.

Buffer: PBS with 0.02% sodium azide,50% glycerol,pH7.3.

## Validation Data

---



Western blot analysis of various lysates using LLGL2 Rabbit pAb (A13323) at 1:1000 dilution. Secondary antibody: HRP-conjugated Goat anti-Rabbit IgG (H+L) (AS014) at 1:10000 dilution. Lysates/proteins: 25µg per lane. Blocking buffer: 3% nonfat dry milk in TBST. Detection: ECL Basic Kit (RM00020). Exposure time: 60s.