

PLEK Rabbit pAb

Catalog No.: A13338

Basic Information

Observed MW

40kDa

Calculated MW

40kDa

Category

Primary antibody

Applications

WB, ELISA

Cross-Reactivity

Human

Background

Enables phosphatidylinositol-3,4-bisphosphate binding activity; protein homodimerization activity; and protein kinase C binding activity. Involved in several processes, including G protein-coupled receptor signaling pathway; actin cytoskeleton organization; and positive regulation of supramolecular fiber organization. Located in cytoplasm and ruffle membrane.

Recommended Dilutions

WB 1:500 - 1:2000

ELISA Recommended starting concentration is 1 µg/mL. Please optimize the concentration based on your specific assay requirements.

Immunogen Information

Gene ID

5341

Swiss Prot

P08567

Immunogen

Recombinant protein (or fragment). This information is considered to be commercially sensitive.

Synonyms

P47; PLEK1; PLEK

Contact

 | 400-999-6126

 | cn.market@abclonal.com.cn

 | www.abclonal.com.cn

Product Information

Source

Rabbit

Isotype

IgG

Purification

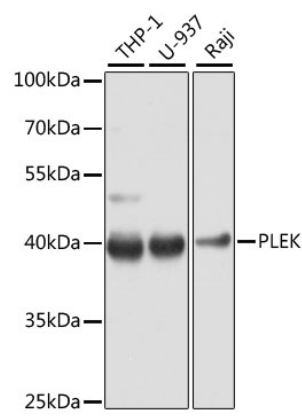
Affinity purification

Storage

Store at -20°C. Avoid freeze / thaw cycles.

Buffer: PBS with 0.02% sodium azide, 50% glycerol, pH 7.3.

Validation Data



Western blot analysis of various lysates using PLEK Rabbit pAb (A13338) at 1:1000 dilution.
Secondary antibody: HRP-conjugated Goat anti-Rabbit IgG (H+L) (AS014) at 1:10000 dilution.
Lysates/proteins: 25µg per lane.
Blocking buffer: 3% nonfat dry milk in TBST.
Detection: ECL Enhanced Kit (RM00021).
Exposure time: 10s.