

# Pumilio 1 Rabbit pAb

**Catalog No.: A13389**

## Basic Information

**Observed MW**

126kDa

**Calculated MW**

126kDa

**Category**

Primary antibody

**Applications**

ELISA, WB, IF/ICC

**Cross-Reactivity**

Human, Mouse

## Background

This gene encodes a member of the PUF family, evolutionarily conserved RNA-binding proteins related to the Pumilio proteins of *Drosophila* and the fem-3 mRNA binding factor proteins of *C. elegans*. The encoded protein contains a sequence-specific RNA binding domain comprised of eight repeats and N- and C-terminal flanking regions, and serves as a translational regulator of specific mRNAs by binding to their 3' untranslated regions. The evolutionarily conserved function of the encoded protein in invertebrates and lower vertebrates suggests that the human protein may be involved in translational regulation of embryogenesis, and cell development and differentiation. Alternatively spliced transcript variants encoding different isoforms have been described.

## Recommended Dilutions

**WB** 1:500 - 1:2000**IF/ICC** 1:50 - 1:200

## Immunogen Information

**Gene ID**

9698

**Swiss Prot**

Q14671

**Immunogen**

Recombinant fusion protein containing a sequence corresponding to amino acids 1-130 of human Pumilio 1 (NP\_055491.1).

**Synonyms**

PUMH; HSPUM; PUMH1; PUM1; SCA47; Pumilio 1

## Contact

 | 400-999-6126 | [cn.market@abclonal.com.cn](mailto:cn.market@abclonal.com.cn) | [www.abclonal.com.cn](http://www.abclonal.com.cn)

## Product Information

**Source**

Rabbit

**Isotype**

IgG

**Purification**

Affinity purification

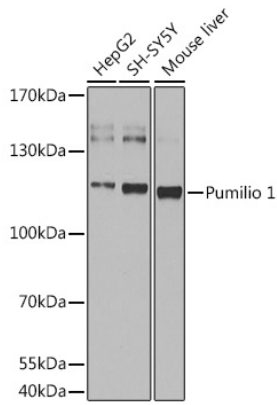
**Storage**

Store at -20°C. Avoid freeze / thaw cycles.

Buffer: PBS with 0.02% sodium azide, 50% glycerol, pH 7.3.

## Validation Data

---



Western blot analysis of extracts of various cell lines, using Pumilio 1 antibody (A13389) at 1:1000 dilution.

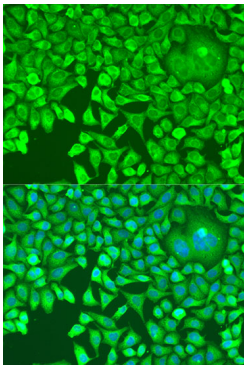
Secondary antibody: HRP Goat Anti-Rabbit IgG (H+L) (AS014) at 1:10000 dilution.

Lysates/proteins: 25µg per lane.

Blocking buffer: 3% nonfat dry milk in TBST.

Detection: ECL Basic Kit (RM00020).

Exposure time: 30s.



Immunofluorescence analysis of U2OS cells using Pumilio 1 antibody (A13389) at dilution of 1:100. Blue: DAPI for nuclear staining.