

DCAF7 Rabbit pAb

Catalog No.: A13392

Basic Information

Observed MW

Refer to figures

Calculated MW

39kDa

Category

Primary antibody

Applications

ELISA,WB,IF/ICC

Cross-Reactivity

Human, Mouse

Background

This gene encodes a protein with multiple WD40 repeats which facilitate protein-protein interactions and thereby enable the assembly of multiprotein complexes. This protein has been shown to function as a scaffold protein for protein complexes involved in kinase signaling. This highly conserved gene is present in eukaryotic plants, fungi, and animals. The ortholog of this gene was first identified in plants as a key regulator of anthocyanin biosynthesis and flower pigmentation. Alternative splicing results in multiple transcript variants.

Recommended Dilutions

WB 1:500 - 1:2000

IF/ICC 1:50 - 1:200

Immunogen Information

Gene ID

10238

Swiss Prot

P61962

Immunogen

Recombinant fusion protein containing a sequence corresponding to amino acids 1-342 of human DCAF7 (NP_005819.3).

Synonyms

AN11; HAN11; WDR68; SWAN-1; DCAF7

Contact

☎ | 400-999-6126

✉ | cn.market@abclonal.com.cn

🌐 | www.abclonal.com.cn

Product Information

Source

Rabbit

Isotype

IgG

Purification

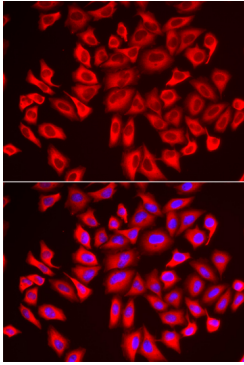
Affinity purification

Storage

Store at -20°C. Avoid freeze / thaw cycles.

Buffer: PBS with 0.02% sodium azide,50% glycerol,pH7.3.

Validation Data



Immunofluorescence analysis of U2OS cells using DCAF7 antibody (A13392). Blue: DAPI for nuclear staining.