

KLF15 Rabbit pAb

Catalog No.: A13420

Basic Information

Observed MW

Calculated MW

44kDa

Category

Primary antibody

Applications

ELISA,IF/ICC

Cross-Reactivity

Human

Background

Enables DNA-binding transcription activator activity, RNA polymerase II-specific and RNA polymerase II cis-regulatory region sequence-specific DNA binding activity. Involved in negative regulation of peptidyl-lysine acetylation and positive regulation of transcription by RNA polymerase II. Located in nuclear speck.

Recommended Dilutions

IF/ICC 1:50 - 1:200

Immunogen Information

Gene ID

28999

Swiss Prot

Q9UIH9

Immunogen

Recombinant fusion protein containing a sequence corresponding to amino acids 1-260 of human KLF15 (NP_054798.1).

Synonyms

KKLF; KLF15

Contact

☎ | 400-999-6126

✉ | cn.market@abclonal.com.cn

🌐 | www.abclonal.com.cn

Product Information

Source

Rabbit

Isotype

IgG

Purification

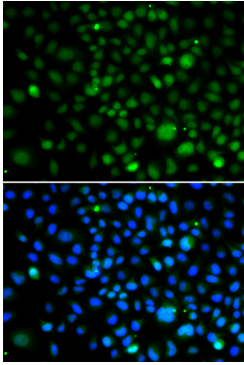
Affinity purification

Storage

Store at -20°C. Avoid freeze / thaw cycles.

Buffer: PBS with 0.02% sodium azide,50% glycerol,pH7.3.

Validation Data



Immunofluorescence analysis of A549 cells using KLF15 antibody (A13420). Blue: DAPI for nuclear staining.