

# IP6K2 Rabbit pAb

Catalog No.: A13427

## Basic Information

### Observed MW

### Calculated MW

49kDa

### Category

Primary antibody

### Applications

ELISA,IF/ICC

### Cross-Reactivity

Human

## Background

This gene encodes a protein that belongs to the inositol phosphokinase (IPK) family. This protein is likely responsible for the conversion of inositol hexakisphosphate (InsP6) to diphosphoinositol pentakisphosphate (InsP7/PP-InsP5). It may also convert 1,3,4,5,6-pentakisphosphate (InsP5) to PP-InsP4 and affect the growth suppressive and apoptotic activities of interferon-beta in some ovarian cancers. Alternative splicing results in multiple transcript variants encoding different isoforms.

## Recommended Dilutions

IF/ICC 1:50 - 1:200

## Immunogen Information

### Gene ID

51447

### Swiss Prot

Q9UHH9

### Immunogen

Recombinant fusion protein containing a sequence corresponding to amino acids 1-180 of human IP6K2 (NP\_057375.2).

### Synonyms

PIUS; IHPK2; InsP6K2; IP6K2

## Contact

☎ | 400-999-6126

✉ | [cn.market@abclonal.com.cn](mailto:cn.market@abclonal.com.cn)

🌐 | [www.abclonal.com.cn](http://www.abclonal.com.cn)

## Product Information

### Source

Rabbit

### Isotype

IgG

### Purification

Affinity purification

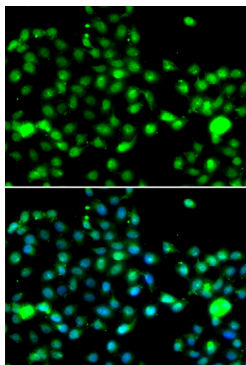
### Storage

Store at -20°C. Avoid freeze / thaw cycles.

Buffer: PBS with 0.02% sodium azide,50% glycerol,pH7.3.

## Validation Data

---



Immunofluorescence analysis of A549 cells using IP6K2 antibody (A13427). Blue: DAPI for nuclear staining.