

# TIM-3/HAVCR2 Rabbit pAb

**Catalog No.: A13445**

## Basic Information

**Observed MW**

50kDa

**Calculated MW**

33kDa

**Category**

Primary antibody

**Applications**

ELISA, WB, IHC-P

**Cross-Reactivity**

Human, Mouse, Rat

## Background

The protein encoded by this gene belongs to the immunoglobulin superfamily, and TIM family of proteins. CD4-positive T helper lymphocytes can be divided into types 1 (Th1) and 2 (Th2) on the basis of their cytokine secretion patterns. Th1 cells are involved in cell-mediated immunity to intracellular pathogens and delayed-type hypersensitivity reactions, whereas, Th2 cells are involved in the control of extracellular helminthic infections and the promotion of atopic and allergic diseases. This protein is a Th1-specific cell surface protein that regulates macrophage activation, and inhibits Th1-mediated auto- and alloimmune responses, and promotes immunological tolerance.

## Recommended Dilutions

**WB** 1:500 - 1:2000**IHC-P** 1:50 - 1:200

## Immunogen Information

**Gene ID**

84868

**Swiss Prot**

Q8TDQ0

**Immunogen**

Recombinant fusion protein containing a sequence corresponding to amino acids 22-202 of human TIM-3/HAVCR2 (NP\_116171.3).

**Synonyms**

TIM3; CD366; KIM-3; SPTCL; TIMD3; Tim-3; TIMD-3; HAVcr-2; TIM-3/HAVCR2

## Contact

 | 400-999-6126 | [cn.market@abclonal.com.cn](mailto:cn.market@abclonal.com.cn) | [www.abclonal.com.cn](http://www.abclonal.com.cn)

## Product Information

**Source**

Rabbit

**Isotype**

IgG

**Purification**

Affinity purification

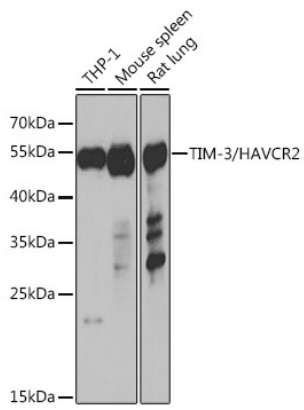
**Storage**

Store at -20°C. Avoid freeze / thaw cycles.

Buffer: PBS with 0.02% sodium azide, 50% glycerol, pH7.3.

## Validation Data

---



Western blot analysis of extracts of various cell lines, using TIM-3/HAVCR2 antibody (A13445) at 1:1000 dilution.

Secondary antibody: HRP Goat Anti-Rabbit IgG (H+L) (AS014) at 1:10000 dilution.

Lysates/proteins: 25µg per lane.

Blocking buffer: 3% nonfat dry milk in TBST.

Detection: ECL Basic Kit (RM00020).

Exposure time: 30s.