

# MLKL Rabbit pAb

Catalog No.: A13452 **3 Publications**

## Basic Information

### Observed MW

Refer to figures

### Calculated MW

53kDa/54kDa

### Category

Primary antibody

### Applications

ELISA, WB, IHC-P

### Cross-Reactivity

Human, Mouse, Rat

## Background

This gene belongs to the protein kinase superfamily. The encoded protein contains a protein kinase-like domain; however, is thought to lack protein kinase activity. This protein plays a critical role in tumor necrosis factor (TNF)-induced necroptosis, a programmed cell death process, via interaction with receptor-interacting protein 3 (Rip3), which is a key signaling molecule in necroptosis pathway. Knockout of this gene in mice showed that it is essential for necroptosis. Alternatively spliced transcript variants have been found for this gene.

## Recommended Dilutions

WB	1:500 - 1:2000
IHC-P	1:50 - 1:200

## Immunogen Information

### Gene ID

74568

### Swiss Prot

### Immunogen

Recombinant fusion protein containing a sequence corresponding to amino acids 1-53 of mouse MLKL (Q9D2Y4).

### Synonyms

9130019I15Rik; MLKL

## Contact

☎	400-999-6126
✉	cn.market@abclonal.com.cn
🌐	www.abclonal.com.cn

## Product Information

### Source

Rabbit

### Isotype

IgG

### Purification

Affinity purification

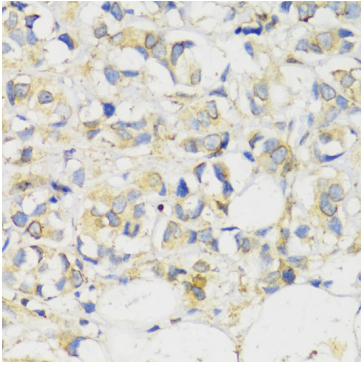
### Storage

Store at -20°C. Avoid freeze / thaw cycles.

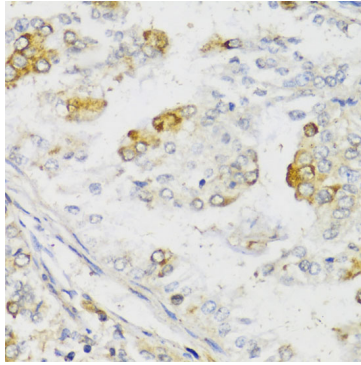
Buffer: PBS with 0.02% sodium azide, 50% glycerol, pH7.3.

## Validation Data

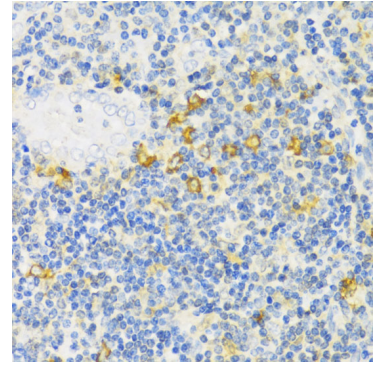
---



Immunohistochemistry analysis of paraffin-embedded Human breast cancer using MLKL Rabbit pAb (A13452) at dilution of 1:100 (40x lens). Microwave antigen retrieval performed with 0.01M PBS Buffer (pH 7.2) prior to IHC staining.



Immunohistochemistry analysis of paraffin-embedded Human uterine cancer using MLKL Rabbit pAb (A13452) at dilution of 1:100 (40x lens). Microwave antigen retrieval performed with 0.01M PBS Buffer (pH 7.2) prior to IHC staining.



Immunohistochemistry analysis of paraffin-embedded Human tonsil using MLKL Rabbit pAb (A13452) at dilution of 1:100 (40x lens). Microwave antigen retrieval performed with 0.01M PBS Buffer (pH 7.2) prior to IHC staining.