

ALAS1 Rabbit pAb

Catalog No.: A13462

Basic Information

Observed MW

Refer to figures

Calculated MW

71kDa

Category

Primary antibody

Applications

ELISA,IF/ICC

Cross-Reactivity

Human

Background

This gene encodes the mitochondrial enzyme which catalyzes the rate-limiting step in heme (iron-protoporphyrin) biosynthesis. The enzyme encoded by this gene is the housekeeping enzyme; a separate gene encodes a form of the enzyme that is specific for erythroid tissue. The level of the mature encoded protein is regulated by heme: high levels of heme down-regulate the mature enzyme in mitochondria while low heme levels up-regulate. A pseudogene of this gene is located on chromosome 12. Alternative splicing results in multiple transcript variants encoding different isoforms.

Recommended Dilutions

IF/ICC 1:50 - 1:200

Immunogen Information

Gene ID

211

Swiss Prot

P13196

Immunogen

Recombinant fusion protein containing a sequence corresponding to amino acids 1-250 of human ALAS1 (NP_954635.1).

Synonyms

ALAS; MIG4; ALAS3; ALASH; ALAS-H; ALAS1

Contact

☎ | 400-999-6126

✉ | cn.market@abclonal.com.cn

🌐 | www.abclonal.com.cn

Product Information

Source

Rabbit

Isotype

IgG

Purification

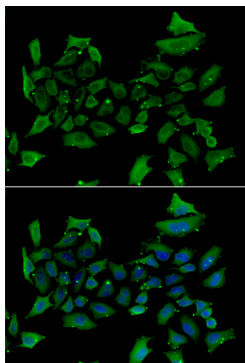
Affinity purification

Storage

Store at -20°C. Avoid freeze / thaw cycles.

Buffer: PBS with 0.02% sodium azide, 50% glycerol, pH 7.3.

Validation Data



Immunofluorescence analysis of HeLa cells using ALAS1 antibody (A13462). Blue: DAPI for nuclear staining.