

# ESE1/ELF3 Rabbit pAb

Catalog No.: A13489 **3 Publications**

## Basic Information

### Observed MW

47kDa

### Calculated MW

41kDa

### Category

Primary antibody

### Applications

ELISA,WB,IP

### Cross-Reactivity

Human, Mouse

## Background

Enables DNA-binding transcription activator activity, RNA polymerase II-specific and sequence-specific double-stranded DNA binding activity. Involved in inflammatory response; negative regulation of transcription, DNA-templated; and positive regulation of transcription by RNA polymerase II. Located in Golgi apparatus; cytosol; and nucleoplasm.

## Recommended Dilutions

**WB** 1:100 - 1:500

**IP** 0.5µg-4µg antibody for  
200µg-400µg extracts of  
whole cells

## Immunogen Information

### Gene ID

1999

### Swiss Prot

P78545

### Immunogen

Recombinant fusion protein containing a sequence corresponding to amino acids 1-280 of human ESE1/ESE1/ELF3 (NP\_004424.3).

### Synonyms

ERT; ESX; EPR-1; ESE-1; ESE1/ELF3

## Contact

☎ | 400-999-6126

✉ | [cn.market@abclonal.com.cn](mailto:cn.market@abclonal.com.cn)

🌐 | [www.abclonal.com.cn](http://www.abclonal.com.cn)

## Product Information

### Source

Rabbit

### Isotype

IgG

### Purification

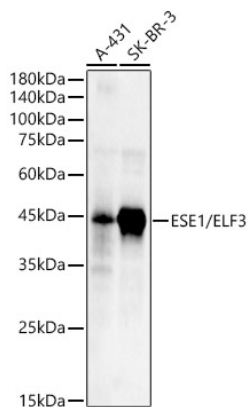
Affinity purification

### Storage

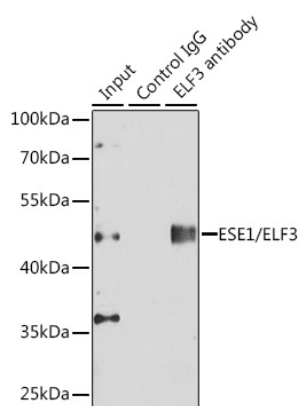
Store at -20°C. Avoid freeze / thaw cycles.

Buffer: PBS with 0.02% sodium azide,50% glycerol,pH7.3.

## Validation Data



Western blot analysis of various lysates, using ESE1/ELF3 Rabbit pAb (A13489) at 1:400 dilution.  
Secondary antibody: HRP Goat Anti-Rabbit IgG (H+L) (AS014) at 1:10000 dilution.  
Lysates/proteins: 25µg per lane.  
Blocking buffer: 3% nonfat dry milk in TBST.  
Detection: ECL Enhanced Kit (RM00021).  
Exposure time: 60s.



Immunoprecipitation analysis of 150 µg extracts of A549 cells using 3 µg ESE1/ESE1/ELF3 antibody (A13489). Western blot was performed from the immunoprecipitate using ESE1/ESE1/ELF3 antibody (A13489) at a dilution of 1:500. Detection: ECL Enhanced Kit (RM00021). Exposure time: 30s.