

# Glutathione Synthetase (GSS) Rabbit pAb

Catalog No.: A13495

## Basic Information

### Observed MW

52kDa

### Calculated MW

52kDa

### Category

Primary antibody

### Applications

ELISA, WB, IF/ICC

### Cross-Reactivity

Human, Mouse, Rat

## Background

Glutathione is important for a variety of biological functions, including protection of cells from oxidative damage by free radicals, detoxification of xenobiotics, and membrane transport. The protein encoded by this gene functions as a homodimer to catalyze the second step of glutathione biosynthesis, which is the ATP-dependent conversion of gamma-L-glutamyl-L-cysteine to glutathione. Defects in this gene are a cause of glutathione synthetase deficiency.

## Recommended Dilutions

WB 1:500 - 1:2000

IF/ICC 1:50 - 1:200

## Immunogen Information

### Gene ID

2937

### Swiss Prot

P48637

### Immunogen

Recombinant fusion protein containing a sequence corresponding to amino acids 1-474 of human Glutathione Synthetase (GSS) (NP\_000169.1).

### Synonyms

GSHS; HEL-S-64p; HEL-S-88n; Glutathione Synthetase (GSS)

## Contact

☎ | 400-999-6126

✉ | [cn.market@abclonal.com.cn](mailto:cn.market@abclonal.com.cn)

🌐 | [www.abclonal.com.cn](http://www.abclonal.com.cn)

## Product Information

### Source

Rabbit

### Isotype

IgG

### Purification

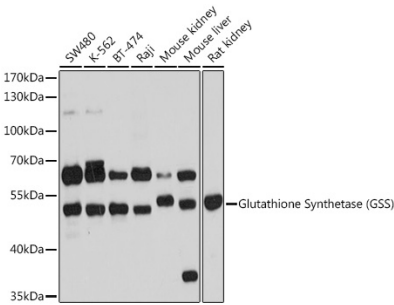
Affinity purification

### Storage

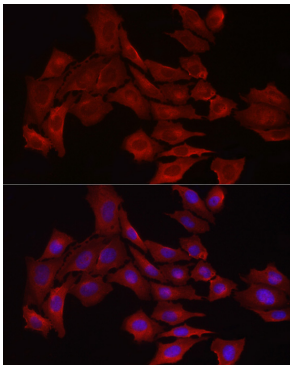
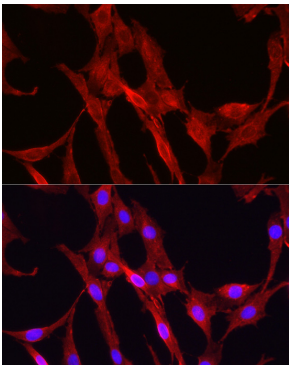
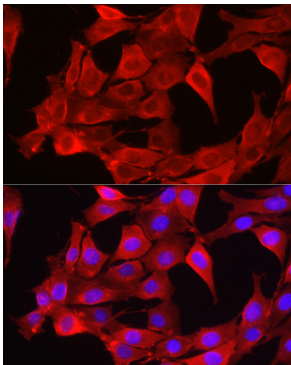
Store at -20°C. Avoid freeze / thaw cycles.

Buffer: PBS with 0.01% thimerosal, 50% glycerol, pH7.3.

# Validation Data



Western blot analysis of extracts of various cell lines, using Glutathione Synthetase (Glutathione Synthetase (GSS)) antibody (A13495) at 1:1000 dilution.  
Secondary antibody: HRP Goat Anti-Rabbit IgG (H+L) (AS014) at 1:10000 dilution.  
Lysates/proteins: 25µg per lane.  
Blocking buffer: 3% nonfat dry milk in TBST.  
Detection: ECL Basic Kit (RM00020).  
Exposure time: 1s.



Immunofluorescence analysis of NIH/3T3 cells using Glutathione Synthetase (GSS) Rabbit pAb (A13495) at dilution of 1:100 (40x lens). Blue: DAPI for nuclear staining.

Immunofluorescence analysis of PC-12 cells using Glutathione Synthetase (GSS) Rabbit pAb (A13495) at dilution of 1:100 (40x lens). Blue: DAPI for nuclear staining.

Immunofluorescence analysis of U2OS cells using Glutathione Synthetase (GSS) Rabbit pAb (A13495) at dilution of 1:100 (40x lens). Blue: DAPI for nuclear staining.