

Lysozyme (LYZ) Rabbit pAb

Catalog No.: A13511 **1 Publications**

Basic Information

Observed MW

13kDa

Calculated MW

17kDa

Category

Primary antibody

Applications

WB,IHC-P,IF/ICC,ELISA

Cross-Reactivity

Human, Mouse

Background

This gene encodes human lysozyme, whose natural substrate is the bacterial cell wall peptidoglycan (cleaving the beta[1-4]glycosidic linkages between N-acetylmuramic acid and N-acetylglucosamine). Lysozyme is one of the antimicrobial agents found in human milk, and is also present in spleen, lung, kidney, white blood cells, plasma, saliva, and tears. The protein has antibacterial activity against a number of bacterial species. Missense mutations in this gene have been identified in heritable renal amyloidosis.

Recommended Dilutions

| | |
|---------------|---|
| WB | 1:500 - 1:1000 |
| IHC-P | 1:50 - 1:200 |
| IF/ICC | 1:50 - 1:200 |
| ELISA | Recommended starting concentration is 1 µg/mL. Please optimize the concentration based on your specific assay requirements. |

Contact

| | |
|--|---------------------------|
|  | 400-999-6126 |
|  | cn.market@abclonal.com.cn |
|  | www.abclonal.com.cn |

Immunogen Information

Gene ID

4069

Swiss Prot

P61626

Immunogen

A synthetic peptide corresponding to a sequence within amino acids 1-100 of human Lysozyme (Lysozyme (LYZ)) (NP_000230.1).

Synonyms

LZM; LYZF1; Lysozyme (LYZ)

Product Information

Source

Rabbit

Isotype

IgG

Purification

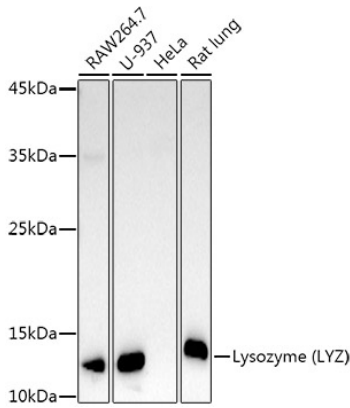
Affinity purification

Storage

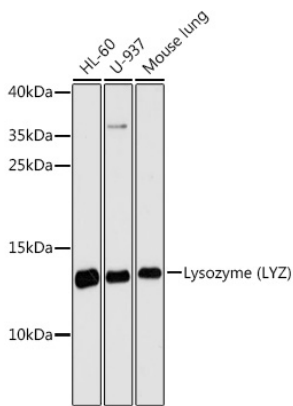
Store at -20°C. Avoid freeze / thaw cycles.

Buffer: PBS with 0.05% proclin300,50% glycerol,pH7.3.

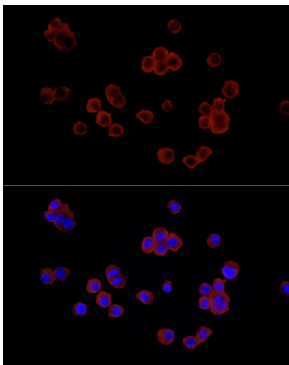
Validation Data



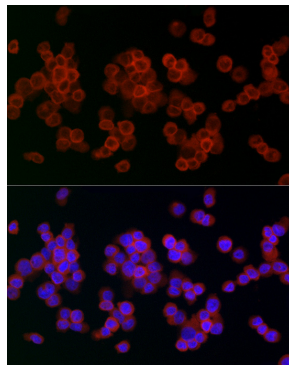
Western blot analysis of various lysates using Lysozyme (LYZ) Rabbit pAb (A13511) at 1:1000 dilution. Secondary antibody: HRP-conjugated Goat anti-Rabbit IgG (H+L) (AS014) at 1:10000 dilution. Lysates/proteins: 25µg per lane. Blocking buffer: 3% nonfat dry milk in TBST. Detection: ECL Basic Kit (RM00020). Exposure time: 30s.



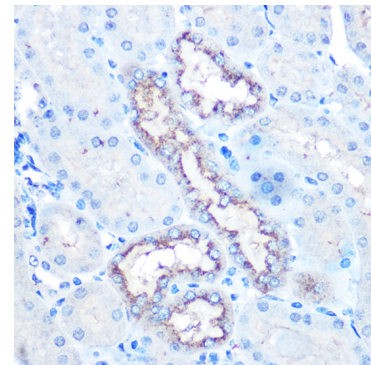
Western blot analysis of various lysates using Lysozyme (LYZ) Rabbit pAb (A13511) at 1:3000 dilution. Secondary antibody: HRP-conjugated Goat anti-Rabbit IgG (H+L) (AS014) at 1:10000 dilution. Lysates/proteins: 25µg per lane. Blocking buffer: 3% nonfat dry milk in TBST. Detection: ECL Basic Kit (RM00020). Exposure time: 90s.



Immunofluorescence analysis of RAW264.7 cells using Lysozyme (LYZ) Rabbit mAb (A13511) at dilution of 1:50 (40x lens). Secondary antibody: Cy3-conjugated Goat anti-Rabbit IgG (H+L) (AS007) at 1:500 dilution. Blue: DAPI for nuclear staining.

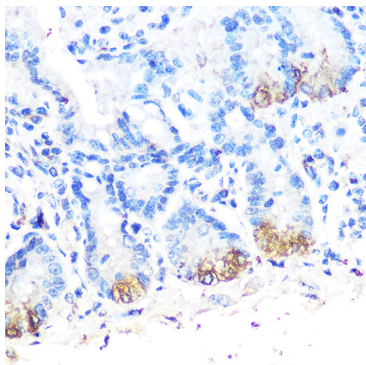


Immunofluorescence analysis of THP-1 cells using Lysozyme (LYZ) Rabbit mAb (A13511) at dilution of 1:50 (40x lens). Secondary antibody: Cy3-conjugated Goat anti-Rabbit IgG (H+L) (AS007) at 1:500 dilution. Blue: DAPI for nuclear staining.



Immunohistochemistry analysis of paraffin-embedded Mouse kidney using Lysozyme (LYZ) Rabbit pAb (A13511) at dilution of 1:100 (40x lens). Microwave antigen retrieval performed with 0.01M Tris/EDTA Buffer (pH 9.0) prior to IHC staining.

Validation Data



Immunohistochemistry analysis of paraffin-embedded Mouse intestine using Lysozyme (LYZ) Rabbit pAb (A13511) at dilution of 1:100 (40x lens). Microwave antigen retrieval performed with 0.01M Tris/EDTA Buffer (pH 9.0) prior to IHC staining.