

IGF2BP1/IMP1 Rabbit pAb

Catalog No.: A13581

Basic Information

Observed MW

70kDa

Calculated MW

63kDa

Category

Primary antibody

Applications

WB,IF/ICC,IP,ELISA

Cross-Reactivity

Human, Mouse, Rat

Background

This gene encodes a member of the insulin-like growth factor 2 mRNA-binding protein family. The protein encoded by this gene contains four K homology domains and two RNA recognition motifs. It functions by binding to the mRNAs of certain genes, including insulin-like growth factor 2, beta-actin and beta-transducin repeat-containing protein, and regulating their translation. Two transcript variants encoding different isoforms have been found for this gene.

Recommended Dilutions

WB 1:500 - 1:2000

IF/ICC 1:50 - 1:200

IP 0.5µg-4µg antibody for
200µg-400µg extracts of
whole cells

ELISA Recommended starting
concentration is 1 µg/mL.
Please optimize the
concentration based on
your specific assay
requirements.

Immunogen Information

Gene ID

10642

Swiss Prot

Q9NZI8

Immunogen

A synthetic peptide corresponding to a sequence within amino acids 478-577 of human IGF2BP1/IMP1 (NP_006537.3).

Synonyms

IMP1; ZBP1; CRDBP; IMP-1; CRD-BP; VICKZ1; IGF2BP1/IMP1

Contact

☎ | 400-999-6126

✉ | cn.market@abclonal.com.cn

🌐 | www.abclonal.com.cn

Product Information

Source

Rabbit

Isotype

IgG

Purification

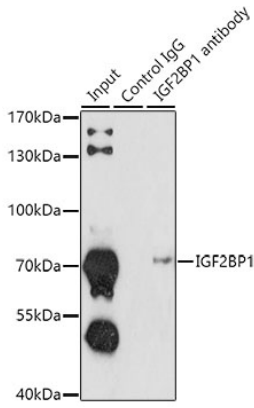
Affinity purification

Storage

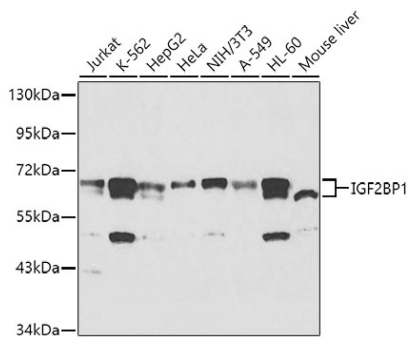
Store at -20°C. Avoid freeze / thaw cycles.

Buffer: PBS with 0.02% sodium azide,50% glycerol,pH7.3.

Validation Data



Immunoprecipitation analysis of 200 µg extracts of K562 cells using 1 µg IGF2BP1/IMP1 antibody (A13581). Western blot was performed from the immunoprecipitate using IGF2BP1/IMP1 antibody (A13581) at a dilution of 1:1000.



Western blot analysis of various lysates using IGF2BP1/IMP1 Rabbit pAb (A13581) at 1:1000 dilution. Secondary antibody: HRP-conjugated Goat anti-Rabbit IgG (H+L) (AS014) at 1:10000 dilution. Lysates/proteins: 25µg per lane. Blocking buffer: 3% nonfat dry milk in TBST.