

# FAM3B Rabbit pAb

Catalog No.: A13592 **1 Publications**

## Basic Information

### Observed MW

28kDa

### Calculated MW

26kDa

### Category

Primary antibody

### Applications

ELISA, WB

### Cross-Reactivity

Human, Mouse

## Background

Involved in insulin secretion. Located in extracellular exosome.

## Recommended Dilutions

WB 1:500 - 1:2000

## Immunogen Information

### Gene ID

54097

### Swiss Prot

P58499

### Immunogen

Recombinant fusion protein containing a sequence corresponding to amino acids 30-235 of human FAM3B (NP\_478066.3).

### Synonyms

2-21; ORF9; PANDER; PRED44; C21orf11; C21orf76; FAM3B

## Contact

☎ | 400-999-6126

✉ | [cn.market@abclonal.com.cn](mailto:cn.market@abclonal.com.cn)

🌐 | [www.abclonal.com.cn](http://www.abclonal.com.cn)

## Product Information

### Source

Rabbit

### Isotype

IgG

### Purification

Affinity purification

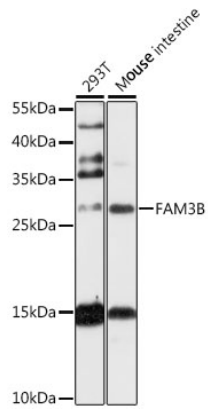
### Storage

Store at -20°C. Avoid freeze / thaw cycles.

Buffer: PBS with 0.02% sodium azide, 50% glycerol, pH 7.3.

## Validation Data

---



Western blot analysis of extracts of various cell lines, using FAM3B antibody (A13592) at 1:1000 dilution.  
Secondary antibody: HRP Goat Anti-Rabbit IgG (H+L) (AS014) at 1:10000 dilution.  
Lysates/proteins: 25µg per lane.  
Blocking buffer: 3% nonfat dry milk in TBST.  
Detection: ECL Basic Kit (RM00020).  
Exposure time: 5s.