

# MLST8 Rabbit pAb

Catalog No.: A13599 **3 Publications**

## Basic Information

### Observed MW

41kDa

### Calculated MW

36kDa

### Category

Primary antibody

### Applications

WB, IHC-P, IF/ICC, ELISA

### Cross-Reactivity

Human, Mouse, Rat

## Background

Enables protein serine/threonine kinase activator activity. Involved in TORC1 signaling; positive regulation of TOR signaling; and regulation of actin cytoskeleton organization. Part of TORC1 complex and TORC2 complex.

## Recommended Dilutions

<b>WB</b>	1:500 - 1:2000
<b>IHC-P</b>	1:50 - 1:200
<b>IF/ICC</b>	1:50 - 1:200
<b>ELISA</b>	Recommended starting concentration is 1 µg/mL. Please optimize the concentration based on your specific assay requirements.

## Immunogen Information

### Gene ID

64223

### Swiss Prot

Q9BVC4

### Immunogen

Recombinant fusion protein containing a sequence corresponding to amino acids 1-326 of human MLST8 (NP\_001186103.1).

### Synonyms

GBL; LST8; POP3; WAT1; GbetaL; MLST8

## Contact

☎	400-999-6126
✉	cn.market@abclonal.com.cn
🌐	www.abclonal.com.cn

## Product Information

### Source

Rabbit

### Isotype

IgG

### Purification

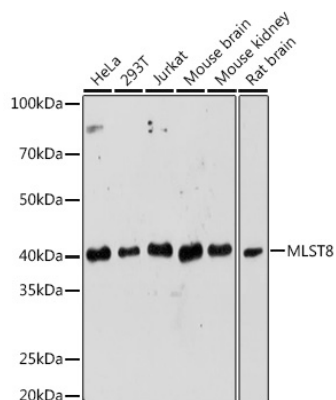
Affinity purification

### Storage

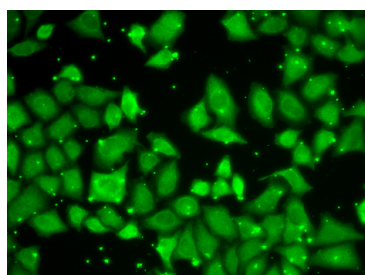
Store at -20°C. Avoid freeze / thaw cycles.

Buffer: PBS with 0.09% Sodium azide, 50% glycerol, pH7.3.

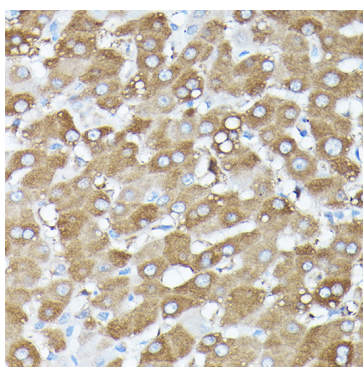
## Validation Data



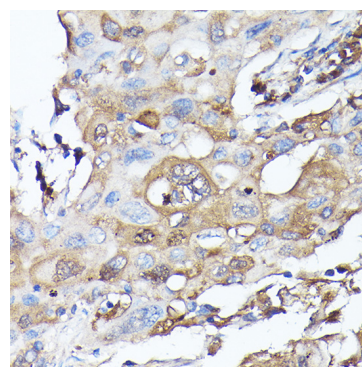
Western blot analysis of various lysates using MLST8 Rabbit pAb (A13599) at 1:1000 dilution. Secondary antibody: HRP-conjugated Goat anti-Rabbit IgG (H+L) (AS014) at 1:10000 dilution. Lysates/proteins: 25µg per lane. Blocking buffer: 3% nonfat dry milk in TBST. Detection: ECL Enhanced Kit (RM00021). Exposure time: 180s.



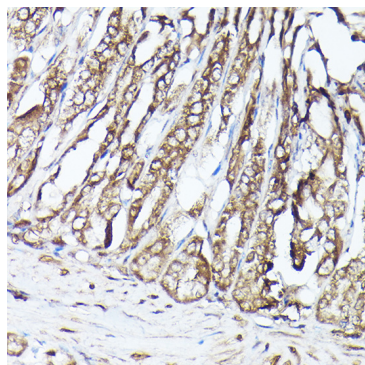
Immunofluorescence analysis of U2OS cells using MLST8 Rabbit pAb (A13599). Secondary antibody: Cy3-conjugated Goat anti-Rabbit IgG (H+L) (AS007) at 1:500 dilution.



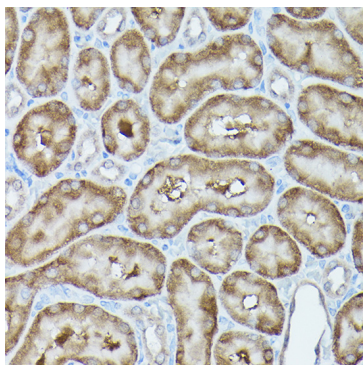
Immunohistochemistry analysis of paraffin-embedded Human liver using MLST8 Rabbit pAb (A13599) at dilution of 1:100 (40x lens). High pressure antigen retrieval performed with 0.01M Citrate buffer (pH 6.0) prior to IHC staining.



Immunohistochemistry analysis of paraffin-embedded Human lung cancer using MLST8 Rabbit pAb (A13599) at dilution of 1:100 (40x lens). High pressure antigen retrieval performed with 0.01M Citrate buffer (pH 6.0) prior to IHC staining.



Immunohistochemistry analysis of paraffin-embedded Mouse stomach using MLST8 Rabbit pAb (A13599) at dilution of 1:100 (40x lens). High pressure antigen retrieval performed with 0.01M Citrate buffer (pH 6.0) prior to IHC staining.



Immunohistochemistry analysis of paraffin-embedded Rat kidney using MLST8 Rabbit pAb (A13599) at dilution of 1:100 (40x lens). High pressure antigen retrieval performed with 0.01M Citrate buffer (pH 6.0) prior to IHC staining.