

WNT3A Rabbit pAb

Catalog No.: A13601 **2 Publications**

Basic Information

Observed MW

Calculated MW

39kDa

Category

Primary antibody

Applications

ELISA, IHC-P

Cross-Reactivity

Human, Rat

Background

The WNT gene family consists of structurally related genes which encode secreted signaling proteins. These proteins have been implicated in oncogenesis and in several developmental processes, including regulation of cell fate and patterning during embryogenesis. This gene is a member of the WNT gene family. It encodes a protein which shows 96% amino acid identity to mouse Wnt3A protein, and 84% to human WNT3 protein, another WNT gene product. This gene is clustered with WNT14 gene, another family member, in chromosome 1q42 region.

Recommended Dilutions

IHC-P 1:50 - 1:200

Immunogen Information

Gene ID

89780

Swiss Prot

P56704

Immunogen

Recombinant fusion protein containing a sequence corresponding to amino acids 1-352 of human WNT3A (NP_149122.1).

Synonyms

WNT3A

Contact

☎ | 400-999-6126

✉ | cn.market@abclonal.com.cn

🌐 | www.abclonal.com.cn

Product Information

Source

Rabbit

Isotype

IgG

Purification

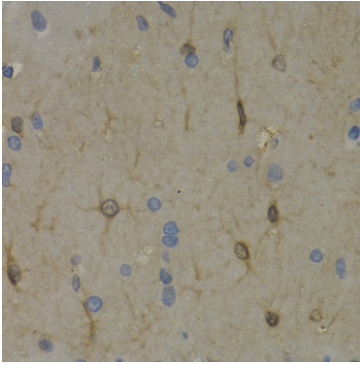
Affinity purification

Storage

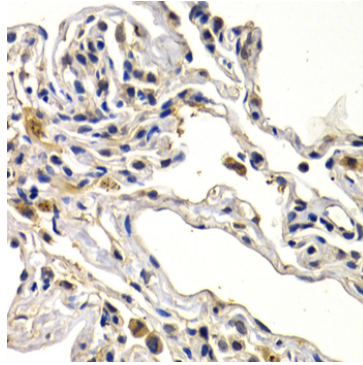
Store at -20°C. Avoid freeze / thaw cycles.

Buffer: PBS with 0.02% sodium azide, 50% glycerol, pH 7.3.

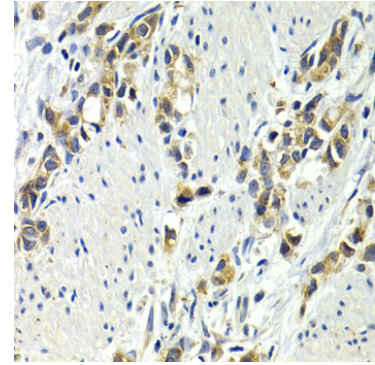
Validation Data



Immunohistochemistry analysis of paraffin-embedded rat brain using WNT3A Rabbit pAb (A13601) at dilution of 1:200 (40x lens). Perform microwave antigen retrieval with 10 mM PBS buffer pH 7.2 before commencing with IHC staining protocol.



Immunohistochemistry analysis of paraffin-embedded human lung cancer using WNT3A Rabbit pAb (A13601) at dilution of 1:200 (40x lens). Perform microwave antigen retrieval with 10 mM PBS buffer pH 7.2 before commencing with IHC staining protocol.



Immunohistochemistry analysis of paraffin-embedded human gastric cancer using WNT3A Rabbit pAb (A13601) at dilution of 1:200 (40x lens). Perform microwave antigen retrieval with 10 mM PBS buffer pH 7.2 before commencing with IHC staining protocol.