

SLC34A1 Rabbit pAb

Catalog No.: A13635

Basic Information

Observed MW

75-80kDa

Calculated MW

69kDa

Category

Primary antibody

Applications

ELISA, WB

Cross-Reactivity

Human, Mouse, Rat

Background

Enables sodium:phosphate symporter activity. Involved in several processes, including phosphate ion homeostasis; phosphate ion transport; and response to lead ion. Located in several cellular components, including apical plasma membrane; mitotic spindle; and nuclear speck. Implicated in several diseases, including Fanconi syndrome (multiple); chronic kidney disease; hereditary hypophosphatemic rickets with hypercalciuria; hypophosphatemic nephrolithiasis/osteoporosis 1; and nephrolithiasis.

Recommended Dilutions

WB 1:1000 - 1:5000

Immunogen Information

Gene ID

6569

Swiss Prot

Q06495

Immunogen

Recombinant fusion protein containing a sequence corresponding to amino acids 562-639 of human SLC34A1 (NP_003043.3).

Synonyms

NPT2; FRTS2; SLC11; HCINF2; NAPI-3; NPTIIa; NPHLOP1; SLC17A2; SLC34A1

Contact

☎ | 400-999-6126

✉ | cn.market@abclonal.com.cn

🌐 | www.abclonal.com.cn

Product Information

Source

Rabbit

Isotype

IgG

Purification

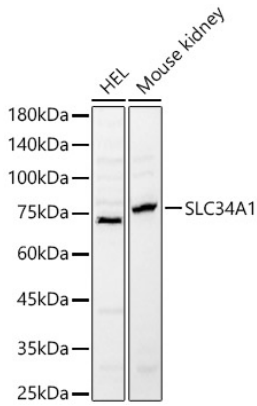
Affinity purification

Storage

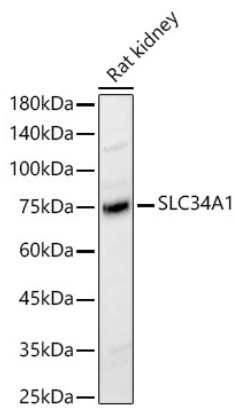
Store at -20°C. Avoid freeze / thaw cycles.

Buffer: PBS with 0.02% sodium azide, 50% glycerol, pH 7.3.

Validation Data



Western blot analysis of various lysates, using SLC34A1 Rabbit pAb (A13635) at 1:2000 dilution.
Secondary antibody: HRP Goat Anti-Rabbit IgG (H+L) (AS014) at 1:10000 dilution.
Lysates/proteins: 25 μ g per lane.
Blocking buffer: 3% nonfat dry milk in TBST.
Detection: ECL Basic Kit (RM00020).
Exposure time: 5s.



Western blot analysis of Rat kidney, using SLC34A1 Rabbit pAb (A13635) at 1:2000 dilution.
Secondary antibody: HRP Goat Anti-Rabbit IgG (H+L) (AS014) at 1:10000 dilution.
Lysates/proteins: 25 μ g per lane.
Blocking buffer: 3% nonfat dry milk in TBST.
Detection: ECL Basic Kit (RM00020).
Exposure time: 5s.