

# C11orf30 Rabbit pAb

Catalog No.: A13643

## Basic Information

### Observed MW

Refer to figures

### Calculated MW

141kDa

### Category

Primary antibody

### Applications

ELISA, WB, IF/ICC

### Cross-Reactivity

Human, Mouse, Rat

## Background

Predicted to enable identical protein binding activity. Predicted to be involved in DNA repair; chromatin organization; and regulation of transcription, DNA-templated. Located in nucleoplasm.

## Recommended Dilutions

WB 1:500 - 1:2000

IF/ICC 1:50 - 1:200

## Immunogen Information

### Gene ID

56946

### Swiss Prot

Q7Z589

### Immunogen

Recombinant fusion protein containing a sequence corresponding to amino acids 1153-1322 of human C11orf30 (NP\_064578.2).

### Synonyms

GL002; C11orf30

## Contact

☎ | 400-999-6126

✉ | [cn.market@abclonal.com.cn](mailto:cn.market@abclonal.com.cn)

🌐 | [www.abclonal.com.cn](http://www.abclonal.com.cn)

## Product Information

### Source

Rabbit

### Isotype

IgG

### Purification

Affinity purification

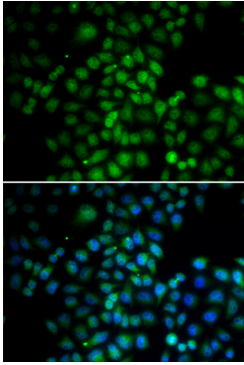
### Storage

Store at -20°C. Avoid freeze / thaw cycles.

Buffer: PBS with 0.02% sodium azide, 50% glycerol, pH 7.3.

## Validation Data

---



Immunofluorescence analysis of HeLa cells using C11orf30 antibody (A13643). Blue: DAPI for nuclear staining.