

# Uhrf2 Rabbit pAb

Catalog No.: A13647

## Basic Information

### Observed MW

90kDa

### Calculated MW

90kDa

### Category

Primary antibody

### Applications

WB, ELISA

### Cross-Reactivity

Mouse, Rat

## Background

Enables histone binding activity. Predicted to be involved in several processes, including maintenance of DNA methylation; protein autoubiquitination; and regulation of cell cycle. Located in heterochromatin and nucleus. Is expressed in several structures, including central nervous system; ear; early conceptus; female reproductive system; and urinary system. Orthologous to human UHRF2 (ubiquitin like with PHD and ring finger domains 2).

## Recommended Dilutions

**WB** 1:500 - 1:2000

**ELISA** Recommended starting concentration is 1 µg/mL. Please optimize the concentration based on your specific assay requirements.

## Immunogen Information

### Gene ID

109113

### Swiss Prot

Q7TMI3

### Immunogen

Recombinant protein (or fragment). This information is considered to be commercially sensitive.

### Synonyms

Nirf; 2310065A22Rik; D130071B19Rik; Uhrf2

## Contact

 | 400-999-6126

 | [cn.market@abclonal.com.cn](mailto:cn.market@abclonal.com.cn)

 | [www.abclonal.com.cn](http://www.abclonal.com.cn)

## Product Information

### Source

Rabbit

### Isotype

IgG

### Purification

Affinity purification

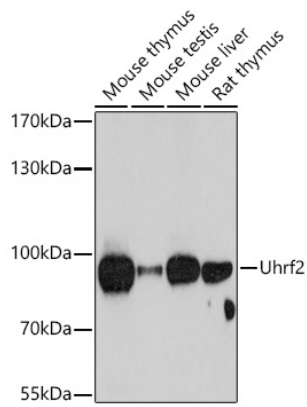
### Storage

Store at -20°C. Avoid freeze / thaw cycles.

Buffer: PBS containing 50% glycerol, preserved with proclin300 or sodium azide (as specified on the Certificate of Analysis), pH 7.3.

## Validation Data

---



Western blot analysis of various lysates using Urf2 Rabbit pAb (A13647) at 1:1000 dilution.  
Secondary antibody: HRP-conjugated Goat anti-Rabbit IgG (H+L) (AS014) at 1:10000 dilution.  
Lysates/proteins: 25µg per lane.  
Blocking buffer: 3% nonfat dry milk in TBST.  
Detection: ECL Basic Kit (RM00020).  
Exposure time: 60s.