

# SLC17A6 Rabbit pAb

Catalog No.: A13648

1 Publications

## Basic Information

### Observed MW

64kDa

### Calculated MW

64kDa

### Category

Primary antibody

### Applications

ELISA, WB

### Cross-Reactivity

Mouse, Rat

## Background

Predicted to enable L-glutamate transmembrane transporter activity and neurotransmitter transmembrane transporter activity. Involved in neurotransmitter loading into synaptic vesicle. Predicted to be located in synaptic vesicle. Predicted to be active in excitatory synapse. Predicted to be integral component of synaptic vesicle membrane.

## Recommended Dilutions

WB 1:500 - 1:2000

## Immunogen Information

### Gene ID

57084

### Swiss Prot

Q9P2U8

### Immunogen

A synthetic peptide corresponding to a sequence within amino acids 483-582 of human SLC17A6 (NP\_065079.1).

### Synonyms

DNPI; VGLUT2; SLC17A6

## Contact

☎ | 400-999-6126

✉ | [cn.market@abclonal.com.cn](mailto:cn.market@abclonal.com.cn)

🌐 | [www.abclonal.com.cn](http://www.abclonal.com.cn)

## Product Information

### Source

Rabbit

### Isotype

IgG

### Purification

Affinity purification

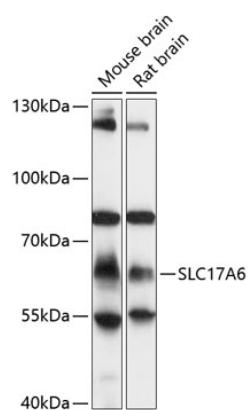
### Storage

Store at -20°C. Avoid freeze / thaw cycles.

Buffer: PBS with 0.01% thimerosal, 50% glycerol, pH7.3.

## Validation Data

---



Western blot analysis of various lysates using SLC17A6 Rabbit pAb (A13648) at 1:1000 dilution.  
Secondary antibody: HRP Goat Anti-Rabbit IgG (H+L) (AS014) at 1:10000 dilution.  
Lysates/proteins: 25µg per lane.  
Blocking buffer: 3% nonfat dry milk in TBST.  
Detection: ECL Basic Kit (RM00020).  
Exposure time: 10s.