

# KLF4 Rabbit mAb

Catalog No.: A13673 **Recombinant** **10 Publications**

## Basic Information

**Observed MW**

55kDa

**Calculated MW**

55kDa

**Category**

Primary antibody

**Applications**

ELISA, WB, IHC-P, IF/ICC, IP

**Cross-Reactivity**

Human, Mouse, Rat

**CloneNo number**

ARC0721

## Background

This gene encodes a protein that belongs to the Kruppel family of transcription factors. The encoded zinc finger protein is required for normal development of the barrier function of skin. The encoded protein is thought to control the G1-to-S transition of the cell cycle following DNA damage by mediating the tumor suppressor gene p53. Mice lacking this gene have a normal appearance but lose weight rapidly, and die shortly after birth due to fluid evaporation resulting from compromised epidermal barrier function. Alternative splicing results in multiple transcript variants encoding different isoforms.

## Recommended Dilutions

<b>WB</b>	1:500 - 1:2000
<b>IHC-P</b>	1:50 - 1:200
<b>IF/ICC</b>	1:50 - 1:200
<b>IP</b>	0.5µg-4µg antibody for 200µg-400µg extracts of whole cells

## Immunogen Information

**Gene ID**

9314

**Swiss Prot**

O43474

**Immunogen**

A synthetic peptide corresponding to a sequence within amino acids 300-400 of human KLF4 (O43474).

**Synonyms**

EZF; GKLF; KLF4

## Contact

 | 400-999-6126 | [cn.market@abclonal.com.cn](mailto:cn.market@abclonal.com.cn) | [www.abclonal.com.cn](http://www.abclonal.com.cn)

## Product Information

**Source**

Rabbit

**Isotype**

IgG

**Purification**

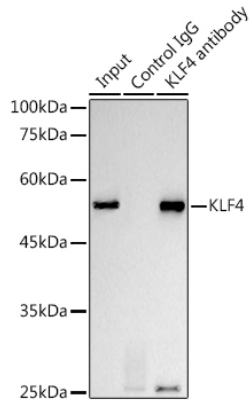
Affinity purification

**Storage**

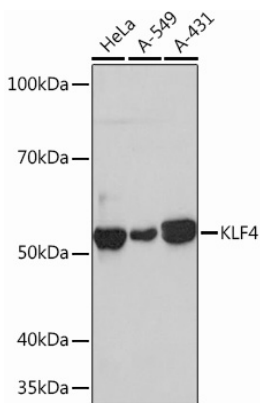
Store at -20°C. Avoid freeze / thaw cycles.

Buffer: PBS with 0.02% sodium azide, 0.05% BSA, 50% glycerol, pH7.3.

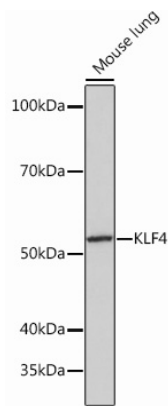
## Validation Data



Immunoprecipitation analysis of 300 µg extracts from HeLa cells using 3 µg KLF4 Rabbit mAb (A13673). Western blot was performed from the immunoprecipitate using KLF4 Rabbit mAb (A13673) at a dilution of 1:1000.

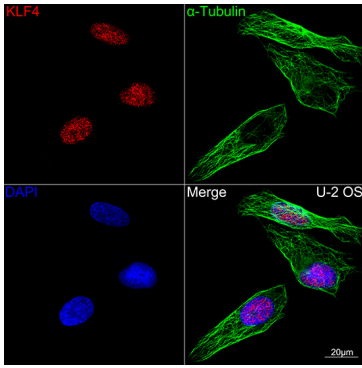


Western blot analysis of various lysates using KLF4 Rabbit mAb (A13673) at 1:1000 dilution. Secondary antibody: HRP Goat Anti-Rabbit IgG (H+L) (AS014) at 1:10000 dilution. Lysates/proteins: 25µg per lane. Blocking buffer: 3% nonfat dry milk in TBST. Detection: ECL Basic Kit (RM00020). Exposure time: 30s.

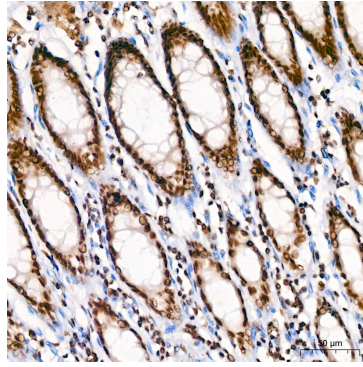


Western blot analysis of lysates from Mouse lung, using KLF4 Rabbit mAb (A13673) at 1:1000 dilution. Secondary antibody: HRP Goat Anti-Rabbit IgG (H+L) (AS014) at 1:10000 dilution. Lysates/proteins: 25µg per lane. Blocking buffer: 3% nonfat dry milk in TBST. Detection: ECL Basic Kit (RM00020). Exposure time: 3min.

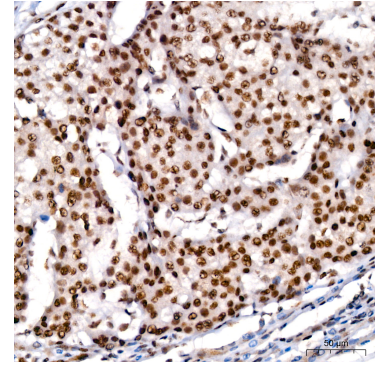
## Validation Data



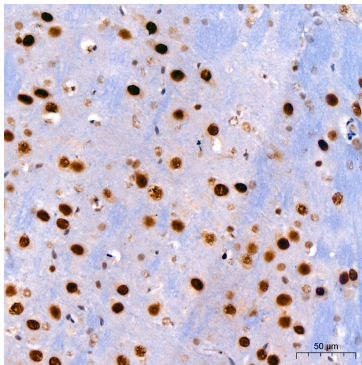
Confocal imaging of U-2 OS cells using KLF4 Rabbit mAb (A13673, dilution 1:100) (Red). The cells were counterstained with  $\alpha$ -Tubulin Mouse mAb (AC012, dilution 1:400) (Green). DAPI was used for nuclear staining (blue). Objective: 100x.



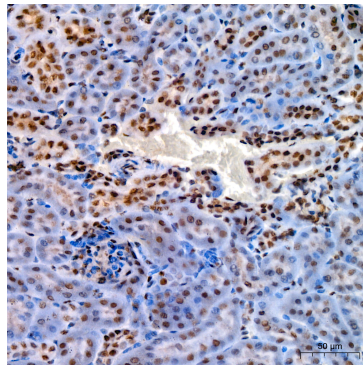
Immunohistochemistry analysis of KLF4 in paraffin-embedded human colon using KLF4 Rabbit mAb (A13673) at dilution of 1:200 (40x lens). Perform high pressure antigen retrieval with 10 mM citrate buffer pH 6.0 before commencing with IHC staining protocol.



Immunohistochemistry analysis of KLF4 in paraffin-embedded human liver cancer using KLF4 Rabbit mAb (A13673) at dilution of 1:200 (40x lens). Perform high pressure antigen retrieval with 10 mM citrate buffer pH 6.0 before commencing with IHC staining protocol.



Immunohistochemistry analysis of KLF4 in paraffin-embedded mouse brain using KLF4 Rabbit mAb (A13673) at dilution of 1:200 (40x lens). Perform high pressure antigen retrieval with 10 mM citrate buffer pH 6.0 before commencing with IHC staining protocol.



Immunohistochemistry analysis of KLF4 in paraffin-embedded mouse kidney using KLF4 Rabbit mAb (A13673) at dilution of 1:200 (40x lens). Perform high pressure antigen retrieval with 10 mM citrate buffer pH 6.0 before commencing with IHC staining protocol.