

DAPP1 Rabbit pAb

Catalog No.: A13716

Basic Information

Observed MW

28kDa

Calculated MW

32kDa

Category

Primary antibody

Applications

ELISA, WB, IF/ICC

Cross-Reactivity

Human, Mouse, Rat

Background

Enables phosphatidylinositol-3,4,5-trisphosphate binding activity and phosphatidylinositol-3,4-bisphosphate binding activity. Predicted to be involved in signal transduction. Located in plasma membrane.

Recommended Dilutions

WB 1:500 - 1:2000

IF/ICC 1:50 - 1:200

Immunogen Information

Gene ID

27071

Swiss Prot

Q9UN19

Immunogen

A synthetic peptide corresponding to a sequence within amino acids 100-273 of human DAPP1 (NP_055210.2).

Synonyms

BAM32; DAPP1

Contact

☎ | 400-999-6126

✉ | cn.market@abclonal.com.cn

🌐 | www.abclonal.com.cn

Product Information

Source

Rabbit

Isotype

IgG

Purification

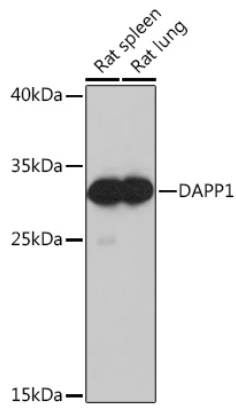
Affinity purification

Storage

Store at -20°C. Avoid freeze / thaw cycles.

Buffer: PBS with 0.01% thimerosal, 50% glycerol, pH7.3.

Validation Data



Western blot analysis of various lysates using DAPP1 Rabbit pAb (A13716) at 1:1000 dilution.
Secondary antibody: HRP Goat Anti-Rabbit IgG (H+L) (AS014) at 1:10000 dilution.
Lysates/proteins: 25µg per lane.
Blocking buffer: 3% nonfat dry milk in TBST.
Detection: ECL Basic Kit (RM00020).
Exposure time: 10s.