

GNPDA1 Rabbit pAb

Catalog No.: A13717

Basic Information

Observed MW

30-33kDa

Calculated MW

33kDa

Category

Primary antibody

Applications

ELISA, WB

Cross-Reactivity

Human, Mouse, Rat

Background

Glucosamine-6-phosphate deaminase (EC 3.5.99.6) is an allosteric enzyme that catalyzes the reversible conversion of D-glucosamine-6-phosphate into D-fructose-6-phosphate and ammonium (Arreola et al., 2003 [PubMed 12965206]).

Recommended Dilutions

WB 1:500 - 1:2000

Immunogen Information

Gene ID

10007

Swiss Prot

P46926

Immunogen

Recombinant fusion protein containing a sequence corresponding to amino acids 1-70 of human GNPDA1 (NP_005462.1).

Synonyms

GPI; HLN; GNP1; GNPI; GNPDA; GNPDA1

Contact

☎ | 400-999-6126

✉ | cn.market@abclonal.com.cn

🌐 | www.abclonal.com.cn

Product Information

Source

Rabbit

Isotype

IgG

Purification

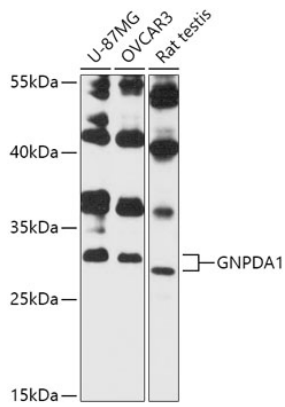
Affinity purification

Storage

Store at -20°C. Avoid freeze / thaw cycles.

Buffer: PBS with 0.01% thimerosal, 50% glycerol, pH7.3.

Validation Data



Western blot analysis of various lysates using GNPDA1 Rabbit pAb (A13717) at 1:3000 dilution.
Secondary antibody: HRP Goat Anti-Rabbit IgG (H+L) (AS014) at 1:10000 dilution.
Lysates/proteins: 25µg per lane.
Blocking buffer: 3% nonfat dry milk in TBST.
Detection: ECL Basic Kit (RM00020).
Exposure time: 30s.