

# KLF17 Rabbit pAb

Catalog No.: A13743

## Basic Information

### Observed MW

43kDa

### Calculated MW

43kDa

### Category

Primary antibody

### Applications

ELISA, WB

### Cross-Reactivity

Human, Mouse

## Background

Enables sequence-specific double-stranded DNA binding activity. Predicted to be involved in negative regulation of transcription by RNA polymerase II. Predicted to act upstream of or within gamete generation. Predicted to be located in nucleus. Predicted to be part of chromatin.

## Recommended Dilutions

WB 1:500 - 1:2000

## Immunogen Information

### Gene ID

128209

### Swiss Prot

Q5JT82

### Immunogen

Recombinant fusion protein containing a sequence corresponding to amino acids 210-389 of human KLF17 (NP\_775755.3).

### Synonyms

ZLF393; ZNF393; Zfp393; KLF17

## Contact

☎ | 400-999-6126

✉ | [cn.market@abclonal.com.cn](mailto:cn.market@abclonal.com.cn)

🌐 | [www.abclonal.com.cn](http://www.abclonal.com.cn)

## Product Information

### Source

Rabbit

### Isotype

IgG

### Purification

Affinity purification

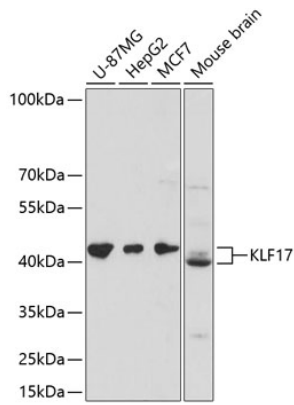
### Storage

Store at -20°C. Avoid freeze / thaw cycles.

Buffer: PBS with 0.01% thimerosal, 50% glycerol, pH7.3.

## Validation Data

---



Western blot analysis of various lysates using KLF17 Rabbit pAb (A13743) at 1:3000 dilution.  
Secondary antibody: HRP Goat Anti-Rabbit IgG (H+L) (AS014) at 1:10000 dilution.  
Lysates/proteins: 25µg per lane.  
Blocking buffer: 3% nonfat dry milk in TBST.  
Detection: ECL Basic Kit (RM00020).  
Exposure time: 30s.