

ELMO2 Rabbit pAb

Catalog No.: A13785

Basic Information

Observed MW

83kDa

Calculated MW

83kDa

Category

Primary antibody

Applications

ELISA, WB

Cross-Reactivity

Human, Mouse, Rat

Background

The protein encoded by this gene interacts with the dedicator of cyto-kinesis 1 protein. Similarity to a *C. elegans* protein suggests that this protein may function in phagocytosis of apoptotic cells and in cell migration. Alternative splicing results in multiple transcript variants.

Recommended Dilutions

WB 1:500 - 1:2000

Immunogen Information

Gene ID

63916

Swiss Prot

Q96JJ3

Immunogen

Recombinant fusion protein containing a sequence corresponding to amino acids 42-120 of human ELMO2 (NP_877496.1).

Synonyms

VMPI; CED12; CED-12; ELMO-2; Ced-12A; ELMO2

Contact

 | 400-999-6126

 | cn.market@abclonal.com.cn

 | www.abclonal.com.cn

Product Information

Source

Rabbit

Isotype

IgG

Purification

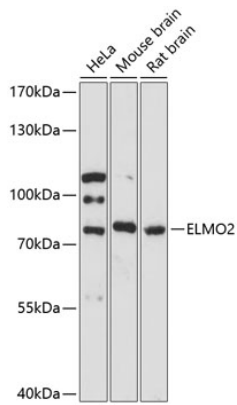
Affinity purification

Storage

Store at -20°C. Avoid freeze / thaw cycles.

Buffer: PBS with 0.01% thimerosal, 50% glycerol, pH7.3.

Validation Data



Western blot analysis of various lysates using ELMO2 Rabbit pAb (A13785) at 1:3000 dilution.
Secondary antibody: HRP Goat Anti-Rabbit IgG (H+L) (AS014) at 1:10000 dilution.
Lysates/proteins: 25 μ g per lane.
Blocking buffer: 3% nonfat dry milk in TBST.
Detection: ECL Basic Kit (RM00020).
Exposure time: 90s.