

# PSME4 Rabbit pAb

Catalog No.: A13815 **2 Publications**

## Basic Information

### Observed MW

211kDa

### Calculated MW

211kDa

### Category

Primary antibody

### Applications

ELISA, WB, IHC-P

### Cross-Reactivity

Human, Mouse, Rat

## Background

Predicted to enable lysine-acetylated histone binding activity; peptidase activator activity; and proteasome binding activity. Predicted to be involved in DNA repair; proteasomal ubiquitin-independent protein catabolic process; and spermatogenesis, exchange of chromosomal proteins. Located in nucleoplasm.

## Recommended Dilutions

WB 1:500 - 1:2000

IHC-P 1:50 - 1:200

## Immunogen Information

### Gene ID

23198

### Swiss Prot

Q14997

### Immunogen

Recombinant fusion protein containing a sequence corresponding to amino acids 1634-1843 of human PSME4 (NP\_055429.2).

### Synonyms

PA200; PSME4

## Contact

☎ | 400-999-6126

✉ | [cn.market@abclonal.com.cn](mailto:cn.market@abclonal.com.cn)

🌐 | [www.abclonal.com.cn](http://www.abclonal.com.cn)

## Product Information

### Source

Rabbit

### Isotype

IgG

### Purification

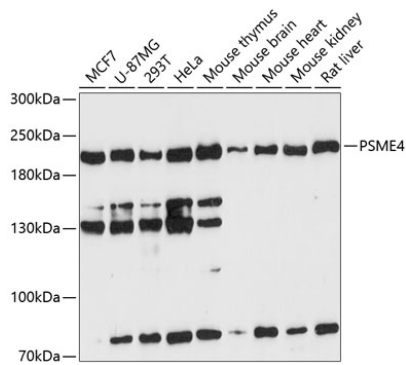
Affinity purification

### Storage

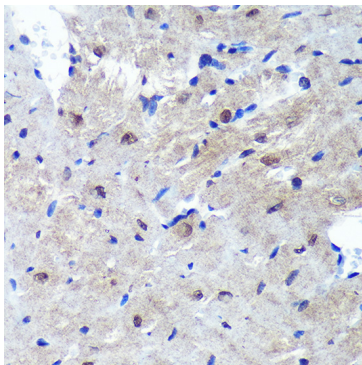
Store at -20°C. Avoid freeze / thaw cycles.

Buffer: PBS with 0.01% thimerosal, 50% glycerol, pH7.3.

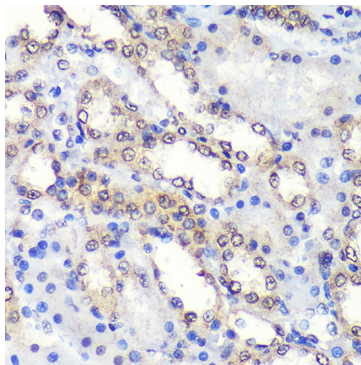
## Validation Data



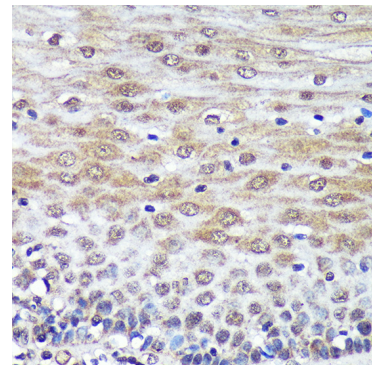
Western blot analysis of various lysates using PSME4 Rabbit pAb (A13815) at 1:3000 dilution. Secondary antibody: HRP Goat Anti-Rabbit IgG (H+L) (AS014) at 1:10000 dilution. Lysates/proteins: 25µg per lane. Blocking buffer: 3% nonfat dry milk in TBST. Detection: ECL Enhanced Kit (RM00021). Exposure time: 90s.



Immunohistochemistry analysis of paraffin-embedded Mouse heart using PSME4 Rabbit pAb (A13815) at dilution of 1:100 (40x lens). Perform microwave antigen retrieval with 10 mM PBS buffer pH 7.2 before commencing with IHC staining protocol.



Immunohistochemistry analysis of paraffin-embedded Rat kidney using PSME4 Rabbit pAb (A13815) at dilution of 1:100 (40x lens). Perform microwave antigen retrieval with 10 mM PBS buffer pH 7.2 before commencing with IHC staining protocol.



Immunohistochemistry analysis of paraffin-embedded Human esophageal using PSME4 Rabbit pAb (A13815) at dilution of 1:100 (40x lens). Perform microwave antigen retrieval with 10 mM PBS buffer pH 7.2 before commencing with IHC staining protocol.