

DLGAP2 Rabbit pAb

Catalog No.: A13818

Basic Information

Observed MW

117kDa

Calculated MW

118kDa

Category

Primary antibody

Applications

ELISA, WB

Cross-Reactivity

Human

Background

The product of this gene is a membrane-associated protein that may play a role in synapse organization and signalling in neuronal cells. This gene is biallelically expressed in the brain, however, only the paternal allele is expressed in the testis (PMID:18055845). Alternatively spliced transcript variants encoding different isoforms have been identified.

Recommended Dilutions

WB 1:500 - 1:2000

Immunogen Information

Gene ID

9228

Swiss Prot

Q9P1A6

Immunogen

Recombinant fusion protein containing a sequence corresponding to amino acids 550-800 of human DLGAP2 (NP_004736.2).

Synonyms

DAP2; SAPAP2; C8orf68; ERICH1-AS1; DLGAP2

Contact

☎ | 400-999-6126

✉ | cn.market@abclonal.com.cn

🌐 | www.abclonal.com.cn

Product Information

Source

Rabbit

Isotype

IgG

Purification

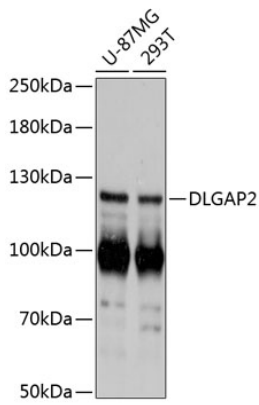
Affinity purification

Storage

Store at -20°C. Avoid freeze / thaw cycles.

Buffer: PBS with 0.01% thimerosal, 50% glycerol, pH7.3.

Validation Data



Western blot analysis of various lysates using DLGAP2 Rabbit pAb (A13818) at 1:3000 dilution.
Secondary antibody: HRP Goat Anti-Rabbit IgG (H+L) (AS014) at 1:10000 dilution.
Lysates/proteins: 25µg per lane.
Blocking buffer: 3% nonfat dry milk in TBST.
Detection: ECL Basic Kit (RM00020).
Exposure time: 1s.