

# CADPS2 Rabbit pAb

Catalog No.: A13821

## Basic Information

### Observed MW

148kDa

### Calculated MW

148kDa

### Category

Primary antibody

### Applications

ELISA, WB

### Cross-Reactivity

Human, Mouse, Rat

## Background

This gene encodes a member of the calcium-dependent activator of secretion (CAPS) protein family, which are calcium binding proteins that regulate the exocytosis of synaptic and dense-core vesicles in neurons and neuroendocrine cells. Mutations in this gene may contribute to autism susceptibility. Multiple transcript variants encoding different isoforms have been found for this gene.

## Recommended Dilutions

WB 1:500 - 1:2000

## Immunogen Information

### Gene ID

93664

### Swiss Prot

Q86UW7

### Immunogen

Recombinant fusion protein containing a sequence corresponding to amino acids 1-80 of human CADPS2 (NP\_001009571.2).

### Synonyms

CAPS2; CADPS2

## Contact

☎ | 400-999-6126

✉ | [cn.market@abclonal.com.cn](mailto:cn.market@abclonal.com.cn)

🌐 | [www.abclonal.com.cn](http://www.abclonal.com.cn)

## Product Information

### Source

Rabbit

### Isotype

IgG

### Purification

Affinity purification

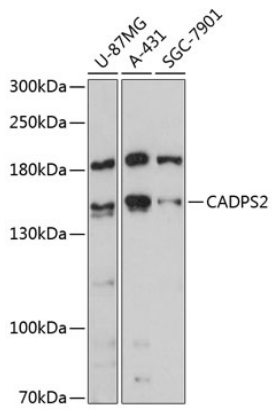
### Storage

Store at -20°C. Avoid freeze / thaw cycles.

Buffer: PBS with 0.01% thimerosal, 50% glycerol, pH7.3.

## Validation Data

---



Western blot analysis of various lysates using CADPS2 Rabbit pAb (A13821) at 1:3000 dilution.  
Secondary antibody: HRP Goat Anti-Rabbit IgG (H+L) (AS014) at 1:10000 dilution.  
Lysates/proteins: 25µg per lane.  
Blocking buffer: 3% nonfat dry milk in TBST.  
Detection: ECL Basic Kit (RM00020).  
Exposure time: 90s.