

ISY1 Rabbit pAb

Catalog No.: A13828

Basic Information

Observed MW

38kDa

Calculated MW

33kDa

Category

Primary antibody

Applications

WB, ELISA

Cross-Reactivity

Human, Mouse

Background

Enables RNA binding activity. Involved in mRNA splicing, via spliceosome. Located in nucleus. Part of U2-type catalytic step 1 spliceosome and catalytic step 2 spliceosome.

Recommended Dilutions

WB 1:500 - 1:2000

ELISA Recommended starting concentration is 1 µg/mL. Please optimize the concentration based on your specific assay requirements.

Immunogen Information

Gene ID

57461

Swiss Prot

Q9ULR0

Immunogen

Recombinant protein (or fragment). This information is considered to be commercially sensitive.

Synonyms

FSAP33; ISY1

Contact

 | 400-999-6126

 | cn.market@abclonal.com.cn

 | www.abclonal.com.cn

Product Information

Source

Rabbit

Isotype

IgG

Purification

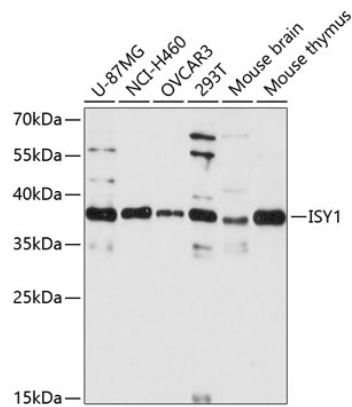
Affinity purification

Storage

Store at -20°C. Avoid freeze / thaw cycles.

Buffer: PBS with 0.01% thimerosal, 50% glycerol, pH7.3.

Validation Data



Western blot analysis of various lysates using ISY1 Rabbit pAb (A13828) at 1:3000 dilution.
Secondary antibody: HRP-conjugated Goat anti-Rabbit IgG (H+L) (AS014) at 1:10000 dilution.
Lysates/proteins: 25µg per lane.
Blocking buffer: 3% nonfat dry milk in TBST.
Detection: ECL Basic Kit (RM00020).
Exposure time: 90s.