

Ch25h Rabbit pAb

Catalog No.: A13832 **2 Publications**

Basic Information

Observed MW

36kDa

Calculated MW

31kDa

Category

Primary antibody

Applications

ELISA, WB

Cross-Reactivity

Human, Mouse

Background

Enables cholesterol 25-hydroxylase activity. Involved in B cell chemotaxis. Acts upstream of or within cholesterol metabolic process. Predicted to be located in endoplasmic reticulum. Predicted to be integral component of membrane. Predicted to be active in endoplasmic reticulum membrane. Is expressed in several structures, including genitourinary system; gut; hemolymphoid system gland; respiratory system; and skin. Orthologous to human CH25H (cholesterol 25-hydroxylase).

Recommended Dilutions

WB 1:500 - 1:2000

Immunogen Information

Gene ID

12642

Swiss Prot

Immunogen

A synthetic peptide corresponding to a sequence within amino acids 200 to the C-terminus of mouse Ch25h (NP_034020.1).

Synonyms

m250H; Ch25h

Contact

 | 400-999-6126

 | cn.market@abclonal.com.cn

 | www.abclonal.com.cn

Product Information

Source

Rabbit

Isotype

IgG

Purification

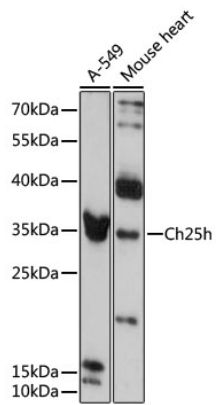
Affinity purification

Storage

Store at -20°C. Avoid freeze / thaw cycles.

Buffer: PBS with 0.01% thimerosal, 50% glycerol, pH7.3.

Validation Data



Western blot analysis of extracts of various cell lines, using Ch25h antibody (A13832) at 1:3000 dilution.
Secondary antibody: HRP Goat Anti-Rabbit IgG (H+L) (AS014) at 1:10000 dilution.
Lysates/proteins: 25µg per lane.
Blocking buffer: 3% nonfat dry milk in TBST.
Detection: ECL Enhanced Kit (RM00021).
Exposure time: 60s.